

LS



LS 500h Self-Charging Hybrid





www.lexus.eu/ls

PREPARE TO SELECT YOUR LEXUS LS 500h

In this brochure we invite you to prepare for the excitement of choosing your new Lexus LS 500h. Standing at the pinnacle of the Lexus range, this hybrid flagship sedan combines the luxury of a long wheelbase sedan with the seductive appeal of a coupé-like profile.

Having selected your favourite colour, wheels and interior trim, inside you'll discover an interior that is distinguished by refined Japanese aesthetics, exquisite craftsmanship and imaginative technology. Wherever you are seated, you'll enjoy supreme comfort provided by redesigned leather seats with multiple power adjustment, heating, cooling and massage functions. On the Luxury grade there is even a reclining rear seat that includes an extending 'ottoman' foot rest, 'shiatsu' massage function and offers over one metre of legroom.

Powered by our latest Lexus Multi Stage Hybrid drivetrain, that benefits from 15 years of leadership in Self-Charging Hybrid technology, the LS 500h's driver-focused cockpit lets you enjoy an exhilarating driving experience. Importantly, all models are fitted with Lexus Safety System + as standard. This includes a Pre-Collision System with pedestrian and bicycle detection; Lane Tracing Assist to help you stay on course; Automatic High Beam for improved vision at night; Road Sign Assist that recognises traffic signs; and Dynamic Radar Cruise Control, which regulates your speed to that of the vehicle in front.

For more dynamic performance, you can choose the new LS 500h F SPORT that features an exclusive new L-mesh grille, F SPORT interior and distinctive alloy wheels.

Finally, you may wish to select an LS 500h equipment pack or order accessories like exclusive Lexus floor mats or a practical boot liner.



01. MODEL
Pages 30-31



02. GRADES
Pages 32-33



03. FEATURES
Pages 34-37



04. TECHNOLOGY
Pages 38-42



05. ACCESSORIES
Page 43



06. F SPORT
Pages 44-45



07. COLOURS
Pages 46-51



08. EQUIPMENT
Pages 52-55



09. TECHNICAL DATA
Pages 56-57

THE LS 500h

Powered by a Lexus Multi Stage Hybrid drivetrain that has been reengineered to deliver enhanced driveability and quietness, the new LS 500h revolutionises the way hybrids perform. By adding a multi-stage shift device to its 3.5-litre V6 full hybrid powertrain, our engineers have created a breakthrough car that offers incredible linear acceleration, flexible power and addictive 10-speed shifts using 'M' mode - yet with all the smoothness and efficiency of a Lexus hybrid. The LS 500h is available with a choice of either Rear-Wheel Drive or All-Wheel Drive.



Stunning Graphite Black¹ bodywork,
19" cast alloy wheels.

¹19" cast alloy wheels is not available in Northern Europe.

**LEXUS MULTI STAGE HYBRID**

The LS 500h features the world's first Multi Stage Hybrid system – combining a powerful 3.5-litre V6 dual VVT-i petrol engine and an advanced electric motor – with output amplified by a pioneering four-stage shift device. This responds instantly to the accelerator with dynamic performance alongside the smoothness and efficiency which characterise Lexus hybrids. Engineers on the LS 500h increased the support from the electric motor and retuned accelerator inputs, making power delivery even smoother. To reduce revving noise when returning to EV mode, they also increased EV assist levels and revised gear shifting characteristics.

LITHIUM-ION HYBRID BATTERY

The LS 500h uses a compact, lightweight lithium-ion hybrid battery. Smaller than conventional nickel-metal hydride units, it fits neatly between the LS's rear seats and the luggage compartment. Although small, it has a high power density, with its 84 cells producing 310.8 volts. Using lithium-ion technology has also reduced the battery's weight, helping lower the LS 500h's overall mass while improving its dynamic handling and performance.





20" cast alloy wheels, multi-spoke design, 245/45 R20 tyres
Adaptive variable air suspension
Lexus Safety System +
Triple LED headlights, BladeScan® Adaptive High-beam System (AHS)

COMFORT

As you'd expect from Lexus, this package has a substantial level of standard equipment.

Upholstery, smooth leather
12-speaker Pioneer® audio system
12.3" touchscreen display
Lexus Premium Navigation



20" cast alloy wheels, black machined finish, 245/45 R20 tyres
Digital rear-view mirror
Lexus Safety System + A
Head-Up Display

EXECUTIVE

The LS 500h Executive is for those who wish to combine exceptional looks and comfort.

Upholstery, semi-aniline leather
23-speaker Mark Levinson® Reference Surround Sound System
12.3" touchscreen display
Ventilated front and rear seats, massage for front seats



F SPORT 20" cast alloy wheels, 245/45 (fr) and 275/40 (rr) R20 tyres
F-mesh signature grille
Lexus Safety System +
Front and rear, F SPORT design

F SPORT

For those in search of a more dynamic look, the F SPORT grade offers features like an exclusive signature grille and F SPORT wheels.

Upholstery, F SPORT leather
23-speaker Mark Levinson® Reference Surround Sound System
12.3" touchscreen display
Machined aluminium sports pedals



20" cast alloy wheels, black machined finish, 245/45 R20 tyres
Head-Up Display
Lexus Safety System + A
Rear Seat Entertainment system

LUXURY

The LS 500h Luxury has been created for those who demand the ultimate in comfort, safety and relaxation.

Upholstery, semi-aniline leather
23-speaker Mark Levinson® Reference Surround Sound System
12.3" touchscreen display
Front massage seats and rear relaxation seat



01



02

01. 20" CAST ALLOY WHEELS

Enhancing the car's powerful presence, this noise reducing 20" wheel has an exquisitely crafted surface finish. Standard on Comfort grade

02. 20" CAST ALLOY WHEELS

This new black 20" alloy wheel is intricately machined for a stunning flagship look. Standard on Executive and Luxury grades

03. LEXUS SIGNATURE GRILLE

This bold new signature grille features an elaborate mesh pattern made up of over 5,000 individual surfaces. The design is so intricate, it took three and a half months for our design team and 'Takumi' model makers to calculate all the elements using advanced 3D modelling software.

04. TRIPLE LED HEADLIGHTS

The jewel-like new headlights on the LS 500h consist of three ultra-small LED units. As well as delivering exceptional light distribution, they are equipped with sequential turn signal indicators and multi-weather lights for use in foggy conditions.

05. LED REAR COMBINATION LIGHTS

The newly designed rear combination lights on the LS 500h are formed of multiple LEDs. Together with the new Piano Black ornamentation, they give the car an instantly recognisable visual signature with crystal-like linear illumination.

06. SUNROOF

An electric, tilt and slide, glass sunroof adds a feeling of freedom, spaciousness and light to the LS 500h cabin.

07. HANDS-FREE POWER BOOT LID

For convenient loading and unloading the LS 500h is available with a hands-free power boot lid. This can be opened and closed simply by moving your foot in front of a sensor located underneath the rear bumper while you are carrying the smart key.



03



04



05



06



07



01



02



03



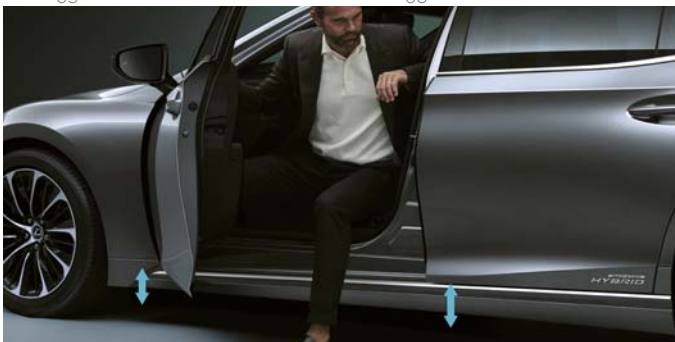
04



05



06



07

01. DRIVER-FOCUSED COCKPIT

To reduce eye movement and potential distraction, all important instruments and displays are positioned close to your view of the road ahead. The controls you use frequently, such as Drive Mode Select and the new 12.3" touchscreen display, are concentrated around the steering wheel.

02. S-FLOW CLIMATE CONTROL / CLIMATE CONCIERGE

S-Flow Climate Control intelligently manages the interior climate according to ambient conditions, ensuring excellent comfort and fuel economy. It can, for example, detect if seats are occupied, and regulate the climate accordingly. Just one touch is all it takes to orchestrate a pleasant environment inside the car.

03. LEATHER STEERING WHEEL / LEATHER AND WOOD STEERING WHEEL

The three-spoke steering wheel is covered in leather and fits snugly and comfortably in your hands. It is available with heating for colder mornings. Integrated switches control audio, telephone, multi-information display, Dynamic Radar Cruise Control and Lane Tracing Assist. A leather and wood steering wheel that combines real leather with beautiful inlays of finely grained wood is available.

04. LEATHER SEATS

The redesigned leather seats on the new LS 500h are an outstanding example of the highest levels of Japanese 'Takumi' craftsmanship. Featuring more sumptuous upholstery for enhanced ride comfort, the leather is of impeccable quality and the stitching is executed with immense precision. Three grades of leather are available: smooth, semi-aniline and, at the pinnacle, L-aniline. Only the top 1% of carefully selected hides meet the quality standards of L-aniline and they undergo a special tanning process to ensure maximum softness. The result is a seat of exceptional beauty and comfort.

05. HAND-PLEATED DOOR PANELS

Exclusive to the LS 500h Luxury grade, hand-pleated door panels are an intriguingly beautiful and dramatic example of Japanese craftsmanship using a delicately precise folding technique similar to that of origami.

06. HAKU INLAYS WITH NISHIJIN FABRIC

'Haku' foil inlays - each leaf hand-folded by a Lexus Takumi craftsman - and vibrant 'Nishijin' fabric combine to express a silver wave effect that was inspired by moonlight glistening on the sea.

07. PREMIUM ACCESS

The LS 500h is available with a system that automatically raises the driver's seat to make it easier to step in/out of the car. When entering the car the driver's seat is lowered before returning to the previous driving position. Also available is a system that lowers the side support of seats to make it easier to get in and out of the car. Once the occupant is in place, the cushion automatically returns to its normal position to support the thighs.

08. FRONT SEAT ADJUSTMENT

Using a sophisticated combination of electric motors and pneumatics, the front seats allow up to 28 different adjustments, enabling the driver and front passenger to experience perfect comfort while travelling in the LS 500h.

09. FRONT MASSAGE SEATS

The LS 500h is available with front seats that provide occupants with a relaxing massage. You can select from a total of five different programmes that target specific areas of the body. These have been developed in consultation with an expert in the Japanese technique of shiatsu massage.

10. HEATED AND VENTILATED SEATS

Activated by a new and more conveniently placed heater switch, driver and passenger heated and ventilated seats are available. This adds to the sense of luxury, especially in extreme weather conditions.

11. REAR SEAT ADJUSTMENT / OTTOMAN

Behind the front seat passenger, a power rear relaxation seat with ottoman foot rest is available. This seat provides the ultimate in relaxation, enabling occupants to enjoy a spacious ride with the optimum angle of recline and the maximum level of comfort. Thanks to a combination of electric motors and pneumatics, 22 different adjustments are possible. When occupants wish to exit the car the seats automatically return to an upright position.

12. REAR MASSAGE SEATS

The LS 500h can be equipped with seats that combine massage with warming. Occupants can choose from a total of seven different programmes, enabling them to select a balance of massage and heat that's precisely to their liking.

13. REAR MULTI-OPERATION PANEL

This touch panel display allows passengers to configure the rear climate zones, adjust the audio and operate the rear blind.

14. REAR SUNSHADES

To enhance your comfort in hot weather, power rear sunshades are fitted as standard to every LS 500h. This shades the whole rear area from sunlight. Rear passengers can alter the shade for the rear, door and rear quarter windows.



08



09



10



11



12



13



14



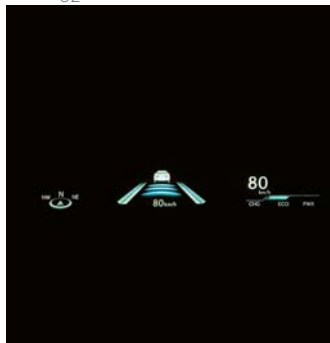
01



02



03



04



05



06



07

01. OPTITRON INSTRUMENTATION

The new LS 500h cockpit features Optitron instrumentation and an 8" TFT LCD-screen that provides a range of data with great clarity, as well as elegant animations when you enter and start up the car.

02. 12.3" TOUCHSCREEN DISPLAY

On the latest LS 500h, driver and front seat passengers can interact seamlessly with Lexus Premium Navigation using either a new 12.3" multimedia touchscreen display, Touch Pad on the centre console, or voice commands. Close attention has been paid to the touchscreen's angle so that the driver can focus on the road ahead. With vivid 3D graphics and many mapping options, for your convenience, the latest maps can be updated 'Over The Air'. Additionally, Apple CarPlay® and Android Auto® allow you to easily display and access your smartphone's apps on the screen.

03. TOUCH PAD

The new 12.3" touchscreen can also be operated by a Touch Pad interface designed to give you the intuitive feel of a smartphone, using operations such as double tapping and flicking.

04. HEAD-UP DISPLAY

With vehicle data projected in colour directly onto your windscreen, the LS 500h's extra wide Head-Up Display lets you check navigation commands, audio settings or safety warnings without taking your eyes off the road ahead.

05. 12-SPEAKER PIONEER® AUDIO

Producing incredibly pure sound, a 12-speaker Pioneer® audio system (with subwoofer) is available. This features an AM/ FM RDS tuner, CD player and Bluetooth® connectivity.

06. MARK LEVINSON® SURROUND SOUND

The 23-speaker Mark Levinson® Reference Surround system is tailored to the specific acoustic properties of the LS 500h cabin. It delivers a peerless 7.1-channel digital home-theatre experience.

07. REAR SEAT ENTERTAINMENT

The Rear Seat Entertainment is operated by the multi-operation panel in the rear and delivers an outstanding video experience via an 11.6" LCD screen. The system allows playback of Blu-ray Disc and SD card, as well as Wi-Fi. The armrest is also equipped with a headphone jack and HDMI port.

01. LEXUS SAFETY SYSTEM +

Standard on the LS 500h, Lexus Safety System + includes:

- Pre-Collision System with pedestrian and bicycle detection
- Dynamic Radar Cruise Control
- Road Sign Assist
- Lane Tracing Assist
- BladeScan® Adaptive High-beam System (AHS)

02. PRE-COLLISION SYSTEM

The LS 500h's Pre-Collision System can now even detect pedestrians at night and cyclists during daytime. If the system judges that the possibility of a collision is high, the brakes are automatically applied to support collision avoidance, or reduce damage in the event of a collision.

03. DYNAMIC RADAR CRUISE CONTROL

For a more relaxing drive, Dynamic Radar Cruise Control maintains a set distance between the LS 500h and the vehicle ahead, even if that vehicle varies its speed. Steering wheel-mounted switches allow you to operate the system without taking your hands off the wheel.

04. ROAD SIGN ASSIST

The Road Sign Assist (RSA) system on the new LS 500h recognises traffic signs and provides information to the driver via the multi-information display. When linked to Dynamic Radar Cruise Control, the car's speed setting can be automatically reset in accordance with the speed limit recognised by RSA. All it takes is the touch of a button. RSA identifies all important road signs and warnings, including electroluminescent and flashing signs.

05. LANE TRACING ASSIST

If you start drifting out of lane, Lane Tracing Assist (LTA) will activate a warning buzzer and give brief corrective steering input. When driving on motorways, LTA will steer to provide lane-keeping support when Dynamic Radar Cruise Control is in operation.

06. AUTOMATIC HIGH BEAM

At night, Automatic High Beam detects oncoming vehicles and automatically dips the high beam headlights, reducing the danger of dazzling other drivers and allowing you to concentrate on the road.

07. BLADESCAN® ADAPTIVE HIGH-BEAM SYSTEM

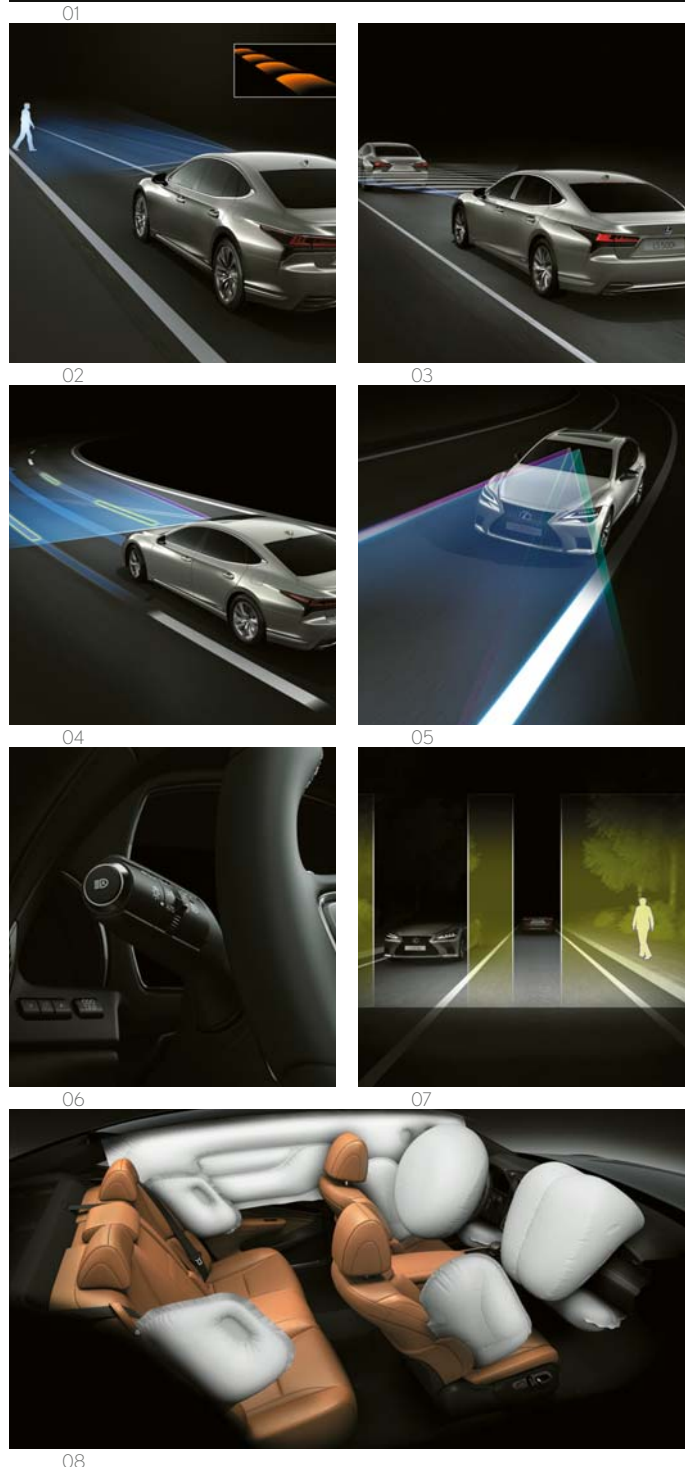
Using light from 12 LEDs projected onto the blades of a circular mirror rotating at 6,000 rpm, and then through a lens, this breakthrough technology helps you recognise pedestrians and road signs more clearly, without dazzling oncoming cars.

08. UP TO 12 AIRBAGS

The LS 500h is equipped with 10 airbags (up to 12 airbags if rear seats is electrically adjustable). In a collision, a depression is formed in the centre of the passenger front airbag to cradle delicate areas such as the nose and mouth. The optional rear power seats come with seat cushion airbags.

* Please note that Pre-Collision System may in some cases not operate properly due to a variety of road conditions, vehicle conditions, weather conditions, operation by the driver or pedestrian/bicycle rider conditions. The driver is solely responsible for safe driving. Please enquire at your local dealer for details on the availability of features.

Under no circumstances should Lexus Safety System + or Lexus Safety System + A be used to replace your driving skills at the wheel. Please read the instructions very carefully before operating the system and remember the driver is always responsible for safety. Details of specifications and equipment are subject to change to suit local conditions and requirements. Please enquire at your local Lexus Authorised Retailer.



LEXUS SAFETY SYSTEM + A

09. LEXUS SAFETY SYSTEM + A

For the ultimate in safety performance, Lexus Safety System + A offers additional features beyond those in Lexus Safety System +. These include:

- Pre-Collision System with Active Steering Assist
- Front Cross Traffic Alert
- Digital Rear-view Mirror

Additionally, the LS 500h AWD Executive and Luxury grades offer:

- Digital Panoramic View Monitor
- Fully automated Advanced Park system

10. PRE-COLLISION SYSTEM WITH ACTIVE STEERING ASSIST

A world-first Lexus technology, Pre-Collision System* with Active Steering Assist determines when there is a high possibility of collision with a pedestrian ahead or with an object such as a guardrail. If the system also determines that it is difficult to avoid the collision with brake control alone - but that it might be avoided using steering control - the system assists in collision prevention or damage reduction using Active Steering Assist in addition to activating an alert and applying the brakes.

11. FRONT CROSS TRAFFIC ALERT

The system assists in making driving safer at road intersections by detecting approaching vehicles from the left or right of your vehicle which might be hidden in blind spots, warning the driver via the Head-Up Display and the 12.3" display.

12. DIGITAL REAR-VIEW MIRROR

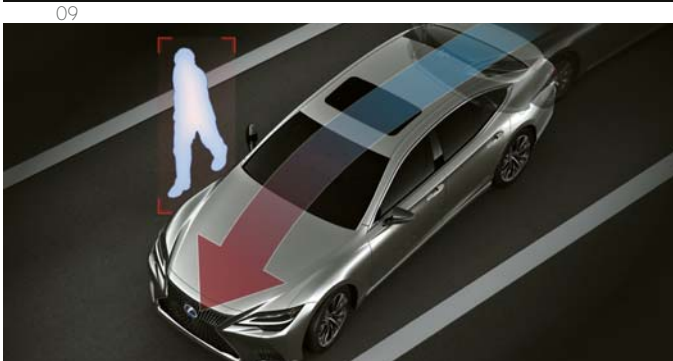
The LS 500h's Digital Rear-view Mirror displays images from a camera at the rear of the car. Providing excellent rearward visibility, drivers can switch between Digital Rear-view Mirror and conventional optical mirror modes.

13. DIGITAL PANORAMIC VIEW MONITOR

For easier driving in confined spaces, Digital Panoramic View Monitor provides a near-360° view around the entire vehicle. It also creates a virtual 3D picture of your LS 500h, showing the vehicle as if seen from above, with on-screen guides to assist close-quarter manoeuvring in the city. Cornering View - another Lexus world first - helps the driver avoid mounting the curb when turning left or right, while Clearance View assists when passing another vehicle on a narrow road.

14. FULLY AUTOMATED ADVANCED PARK SYSTEM

This Lexus breakthrough enables smooth and trouble-free automatic parking. At the touch of a button, the system automatically controls acceleration, steering, gear shifts and braking. With cameras and sensors tracking other cars, white lines and pedestrians, the fully automated Advanced Park system will recognise parking spaces that you use frequently and then park your LS 500h for you. Our engineers even deliberately incorporated human-like driving styles so that automated parking feels more 'natural' to you and your passengers.



01. PARKING SUPPORT ALERT

Providing great confidence when parking at close quarters, Parking Support Alert gives warning of collision using clearance sonar, Rear Cross Traffic Alert and a display in the rear camera.

02. PARKING SUPPORT BRAKE

The Parking Support Brake helps the LS 500h to avoid, in parking situations, minor collisions and damage during low-speed manoeuvres. The system monitors the area at the front and rear of the car and if it judges there is a possibility of contact with a static object, a vehicle approaching from the rear or a rear pedestrian, the system can adjust drive force and brake control.

03. REAR CROSS TRAFFIC ALERT AND BRAKING

Rear Cross Traffic Alert is a function which warns of vehicles approaching from behind. It helps the LS 500h to avoid, in parking situations, minor collisions and damage during low-speed driving. The system monitors the area at the rear of the LS 500h and if it judges there is a possibility of contact with a vehicle approaching from the rear, it can adjust driving force and brake control. When necessary, the system alerts you with a buzzer and a visual display in the 12.3" display and relevant door mirrors.

04. BLIND SPOT MONITOR

Radar devices mounted in the rear bumper detect vehicles in adjacent lanes that are not visible in the door mirrors up to 60 metres behind your LS 500h. If the driver is indicating to change lane and a vehicle enters the blind spot, a warning signal appears in the relevant door mirror.

05. PANORAMIC VIEW MONITOR

The Panoramic View Monitor* helps you reverse into parking spaces. On the 12.3" display it shows a video image of the space into which you are reversing, and overlays guidelines to facilitate you steering the car.

06. TYRE PRESSURE WARNING SYSTEM

The multi-information display tracks tyre pressure data and warns should pressure drop in one of them. The system can reduce the risk of a puncture and improve both fuel economy and tyre life.



01/02/03



04



05



06

* People and obstacles that show in the monitor differ from the actual position and distance. Do not rely completely on the monitor and make sure you check the safety around the vehicle with your own eyes when driving.



01



02



03



04



05

06

01. HIGH RIGIDITY / LIGHTWEIGHT BODY

The LS 500h has an extremely rigid body in order to deliver a ride that is particularly refined and stable. The extensive use of lightweight materials, such as aluminium, and advanced bonding techniques have helped minimise weight in order to improve fuel economy and increase performance.

02. AERODYNAMICS

The overall form of the LS 500h's upper body has been crafted to have an ideal aerodynamic shape. The sides of the front bumper have been shaped to direct the airflow along the wheel arches. Flush side window glass suppresses the turbulence that usually occurs when air flows over uneven surfaces. Beneath the car, the underbody has been almost fully covered to reduce drag, with aerodynamic fins located to guide the airflow smoothly rearwards. Vertical fins just behind the rear tyres help reduce turbulence and drag. The LS 500h has a 0.26 coefficient of drag (0.28 with AWD version).

03. DRIVE MODE SELECT

Located beside the steering wheel, Drive Mode Select lets you shift effortlessly between different drive modes according to your mood and prevailing conditions. Choose between Comfort / Eco, Normal / Custom, Sport S / Sport S+ modes.

04. ADAPTIVE VARIABLE SUSPENSION / AIR SUSPENSION

To ensure an even more comfortable drive, the new LS 500h's retuned Adaptive Variable Suspension intelligently controls the damping force on all four wheels for a smoother and more refined ride. This not only improves ride comfort, but also increases handling stability.

A new, electronically controlled air suspension is also available for the new LS 500h, providing exceptional ride quality. It uses a closed system in which compressed air is stored in a pneumatic tank so that it can be supplied to the suspension at the moment it's needed to raise vehicle height.

05. LEXUS DYNAMIC HANDLING

Not available in Northern Europe.

06. VEHICLE DYNAMICS INTEGRATED MANAGEMENT

State-of-the-art Vehicle Dynamics Integrated Management is fitted as standard to the LS 500h. This enables all of the car's stability and control systems to work together, ensuring a level of intervention that is much more refined than if these systems acted independently of one another.

A. Without VDIM. Dynamic control systems work independently.
B. With VDIM. Dynamic control systems work smoothly together.

01. 19" ALLOY WHEEL

The LS 500h's powerful sports performance was the primary visual influence in the design of the multiple spoke 19" alloy wheels.



01



02. TEXTILE FLOOR MATS (3 COLOUR VERSIONS)

Made of sound-absorbing acuvelour, these luxurious yet protective textile floor mats are shaped for a perfect fit. The driver's mat has a special fixing to prevent slippage during use.

03. RUBBER FLOOR MAT

Genuine, tailored-fit rubber floor mats help protect your carpets against the very worst conditions. They are impervious to dirt, mud and water and can be removed for easy cleaning.

04. REAR BUMPER PROTECTION PLATE (STAINLESS STEEL)

Designed to protect the rear bumper paintwork against scratching when sliding heavy or awkward loads into the into the boot, the protection plate is also particularly effective for guarding the paintwork of the boot area and adds a styling element to the rear bumper.



02

05. BOOT LINER

Tailored to fit the boot of your vehicle and provide protection against dirt and spills, the boot liner features a special anti-slip surface pattern to help stop luggage moving.



03



04



05



01



02

01. F SPORT BADGE

Although discreet, the F SPORT logo is a badge of distinction. It reflects the car's motorsport-inspired design influences and hints at a lineage that is shared – in part – with the Lexus LFA V10 supercar.

02. 20" F SPORT ALLOYS

With its sporty black spluttered coating and matching centre cap, this wheel expresses high performance and enhances the LS 500h F SPORT's dynamic and powerful stance.

03. F SPORT EXCLUSIVE BRAKE CALLIPERS

The dynamic prowess of the LS 500h is highlighted by these black painted callipers proudly bearing the Lexus logo.

04. F SPORT L-MESH GRILLE

The exclusive new F SPORT grille design sets this car apart. Finished in black, the complex mesh has over 7,000 individual surfaces, which required more than six months of intensive computer modelling to design.

05. F SPORT EXCLUSIVE SURFACE TREATMENT

Exclusive Jet Black plating has been applied to certain parts of the exterior to enhance the sporting appearance of the car.



03



04



05

06. F SPORT LEATHER

These unique F SPORT seats have the F SPORT emblem embossed in the headrest and are decorated with an exclusive L-shaped perforation pattern.

07. F SPORT STEERING WHEEL AND GEARSHIFT LEVER

Finished in perforated leather, the F SPORT gearshift design matches the steering wheel to create a thrilling sports look.

08. MACHINED SPORTS PEDALS

Machined sports pedals help dial up the sporting excitement and improve your contact with your car.

09. CLOCK WITH L-MOTIF

The face of the exclusive F SPORT clock has a unique L-shaped pattern.

10. F SPORT INSTRUMENTATION

Inspired by the instruments on the LFA supercar, a movable meter ring allows the driver to change the information that is being displayed, enabling a single meter to be used for multiple information, thus reducing unnecessary eye-movement. This feature is exclusive to the LS 500h F SPORT.



06



07



08



09



10

DEVELOPING A NEW LEXUS PAINT COLOUR IS BOTH COMPLEX AND TIME CONSUMING



Lexus designers never use off-the-shelf colours, preferring instead to develop their own, from scratch, a process that can take up to two years. The Lexus paint palette totals some 30 different colours including metallic finishes like the specially developed Lunar Silver paintwork for the new LS 500h. For this exclusive new colour, our designers chose the scene of moonlight shining on the ocean as inspiration for the interior and exterior design. To create a flawless mirror-like shine, sonic technology is used to condense the paint into a layer that is just one micron thick. This means the aluminium particles it contains are denser and more uniformly aligned. To achieve these results the surface of the base, primer and clear layers are all rendered as smooth as possible.

There are no shortcuts to creating a new Lexus colour: a designer's decision comes only after going through hundreds of samples. "When developing a new colour I see so many shades of paint that I sometimes can't see straight at the end of the day," says Megumi Suzuki, one of Lexus' most experienced colour designers. To do her job, it takes a grasp of chromogenics and a keen eye.

"Every time I meet someone or walk into a shop or go to someone's house, I check out colours and materials," she says. "There are a lot of people like me in our division."

Even after a colour has been decided upon, there's plenty to do. At various stages during development, Suzuki had to enlist a small army of experts: lab technicians who mix the paint, clay sculptors, engineers and the assembly-line paint shop crew who would give each car a flawless, uniform coat. Every few weeks Kansai Paint (a Lexus paint supplier) produces a new batch, and Lexus designers give the samples a thorough look-over, bending the test panels to mimic the contours of a car. All are scrutinised indoors and outdoors, under floodlights, in sunlight, shade and overcast conditions, and at different times of the day and months of the year.

Selecting the final colour is not easy. A colour that is dazzling on a summer morning can appear sickly in the shade or under showroom lamps. Designers also have to contend with the vagaries of their own preferences. "The odd thing about colour is that your perception of it can change depending on the season, how you feel that day and the trends you're seeing," says Suzuki.

F WHITE | 083¹



SONIC WHITE | 085²



SONIC PLATINUM | 1L2



LUNAR SILVER | 1L3



BLACK | 212³



GRAPHITE BLACK | 223



SONIC TITANIUM | 1J7



MANGANESE LUSTER | 1K2



SONIC AGATE | 3U3



MORELLO RED | 3R1



SAPPHIRE BLUE | 8X1¹



DEEP BLUE | 8X5



¹Exclusive to F SPORT.

²Not available on F SPORT.

³Solid colour

Please note: due to printing variances, actual paintwork colours may vary slightly from those illustrated.

SMOOTH LEATHER¹



Black

F SPORT LEATHER²



Galaxy Black



Flare Red



F White

SEMI-ANILINE LEATHER³



Black



Hazel



Sandstone



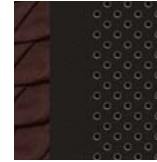
L White



Crimson & Black



Black with Nishijin
door trim



Crimson & Black
with Hand-Pleated
door trim

L-ANILINE LEATHER⁴



Black



Ochre

INLAYS⁵



Open Pore Ash



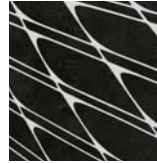
Open Pore
Walnut



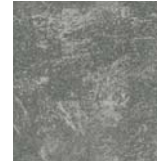
Art Wood
Organic



Art Wood
Herringbone



Laser Cut Special
Open Pore Ash



Haku



Kiriko Glass

F SPORT INLAY⁶



Naguri-Style
Aluminium

¹ Smooth leather is standard on Comfort grade.

² F SPORT leather is standard on F SPORT.

³ Semi-aniline leather is standard on Executive and Luxury grades.

⁴ L-aniline leather is available as part of the L-aniline leather pack on Luxury grade.

⁵ Open Pore Ash is standard on Comfort and Executive grades. Art Wood Organic and Art Wood Herringbone are optional on Executive and Luxury grades. Open Pore Walnut is optional on Executive grade.

Laser Cut Special Open Pore Ash is standard on Luxury and optional on Executive grade. Kiriko and Haku are optional on Luxury grade as part of the Crystal and Nishijin-Haku packages, respectively.

⁶ Naguri-Style Aluminium inlays are standard on F SPORT.



01



02



03



04

- 01 Black smooth leather with
Open Pore Ash (Comfort)
- 02 Galaxy Black F SPORT leather
with Naguri-Style Aluminium inlays
(F SPORT)
- 03 Flare Red F SPORT leather with
Naguri-Style Aluminium inlays
(F SPORT)
- 04 F White F SPORT leather with
Naguri-Style Aluminium inlays
(F SPORT)



05



06



07



08

- 05 L White semi-aniline leather with Art Wood Herringbone inlays (Executive)
- 06 Black semi-aniline leather with Art Wood Organic inlays (Executive)
- 07 Hazel semi-aniline leather with Artwood Organic inlays (Executive)
- 08 Sandstone semi-aniline leather with Art Wood Herringbone inlays (Executive)



09



10



11



12

- 09 Black L-aniline leather with Laser Cut Special Open Pore Ash inlays (Luxury)
- 10 Ochre L-aniline leather with Laser Cut Special Open Pore Ash inlays (Luxury)
- 11 Black L-aniline leather with Nishijin door trim with Haku inlays (Luxury)
- 12 Crimson & Black L-aniline leather with hand-pleated door trim with Kiriko Glass inlays (Luxury)

EXTERIOR	COMFORT	EXECUTIVE	F SPORT	LUXURY
Auto-levelling headlights	■	■	■	■
Automatic boot close (soft shut)	■	■	■	■
Black brake callipers with Lexus logo, front and rear	—	—	■	—
Boot lid, hands-free opening function	—	■	■	■
Cornering lights	■	■	■	■
Daytime Running Lights (DRL), LED	■	■	■	■
Door mirrors, electrically adjustable and folding, electro chromatic (auto-dimming), heated	■	■	■	■
F-mesh signature grille	—	—	■	—
Glass sunroof, electric tilt/slide	■	■	■	■
Headlight cleaners	■	■	■	■
Headlights, triple LED	■	■	■	■
Infrared Ray (IR) insulating glass, windscreen, front and rear side glass	■	■	■	■
L-mesh signature grille	■	■	—	■
Multi-weather lights	■	■	■	■
Rain sensing windscreen wipers	■	■	■	■
Rear combination lights, LED	■	■	■	■
Rear spoiler	■	—	—	—
Sequential indicator lights, front and rear	■	■	■	■
WHEELS				
20" cast alloy wheels, multi-spoke design, 245/45 R20 tyres	■	—	—	—
20" cast alloy wheels, black machined finish, 245/45 R20 tyres	—	■	—	■
20" cast alloy wheels, F SPORT design, 245/45 (front) and 275/40 (rear) R20 tyres	—	—	■	—
ACTIVE SAFETY AND DRIVING DYNAMICS				
Adaptive Variable Suspension (AVS)	■	■	■	■
Air suspension, front and rear	■	■	■	■
Automatic Rear Flashing Hazard Lights (ARFHL)	■	■	■	■
BladeScan® Adaptive High-beam System (AHS)	■	■	■	■
Blind Spot Monitor (BSM)	■	■	■	■
Drive Mode Select, Eco / Comfort / Normal / Custom / Sport S / Sport S+	■	■	■	■
Dynamic Radar Cruise Control (DRCC), all-speed	■	■	■	■
Electric Power Steering (EPS)	■	■	■	■
Front Cross Traffic Alert (FCTA)	—	■	—	■
Front Cyclist detection, daytime only	■	■	■	■
Front pedestrian detection	■	■	■	■
Fully Automated Advanced parking	—	■	—	■
Hill-start Assist Control (HAC)	■	■	■	■
Intelligent parking assist sensors, front and rear	■	■	■	■
Lane Tracing Assist (LTA)	■	■	■	■
Pre-Collision System (PCS)	■	■	■	■
Rear Cross Traffic Alert (RCTAB)	■	■	■	■
Road Sign Assist (RSA)	■	■	■	■
Tyre Pressure Warning System (TPWS) with Auto location	■	■	■	■
Vehicle Dynamics Integrated Management (VDIM)	■	■	■	■

PASSIVE SAFETY	COMFORT	EXECUTIVE	F SPORT	LUXURY
Airbag cut-off switch, front passenger	■	■	■	■
10 Airbags, driver and front passenger; head, side and knee / curtain shield	■	—	■	—
12 Airbags, driver and front passenger; head, side and knee / curtain shield / rear cushion	—	■	—	■
Audible and visual front seatbelts reminder	■	■	■	■
ISOFIX attachment, outer rear seats	■	■	■	■
Pop Up Hood (PUH)	■	■	■	■
Seatbelt pre-tensioners, front and rear seats	■	■	■	■
SECURITY				
Anti-theft system – siren, immobiliser, intrusion and inclination sensors	■	■	■	■
Auto door locking	■	■	■	■
Double door lock	■	■	■	■
Wireless door lock	■	■	■	■
AUDIO, COMMUNICATION AND INFORMATION				
12.3" multimedia display (touch screen)	■	■	■	■
12V socket x3	■	■	■	■
12-speaker Pioneer® audio system	■	—	—	—
23-speaker Mark Levinson® Reference Surround Sound System	—	■	■	■
2 headphone jacks and HDMI port	—	—	—	■
2 USB ports and AUX socket	■	■	■	■
8" colour multi-information display	■	■	■	■
Active Noise Control (ANC)	■	■	■	■
Analogue clock with GPS function	■	■	■	■
Digital Panoramic View Monitor (PVM)	—	■	—	■
Panoramic View Monitor (PVM)	■	—	■	—
Head-Up Display (HUD)	—	■	■	■
Lexus parking assist monitor	■	■	■	■
Lexus Premium Navigation	■	■	■	■
Smartphone integration (Apple Carplay®, Android Auto®)	■	■	■	■
Rear Seat Entertainment system (RSE)	—	—	—	■
Steering wheel mounted controls, audio / display / phone / voice / DRCC / LTA	■	■	■	■
Touch Pad operation for multimedia display	■	■	■	■
INTERIOR COMFORT AND CONVENIENCE				
18-way electrically adjustable outer rear seat on passenger's side	—	■	—	—
20-way electrically adjustable front seats	■	—	—	—
22-way electrically adjustable outer rear seat on passenger's side	—	—	—	■
28-way electrically adjustable front driver's seat and passenger's seat	—	■	■	■
2-way manually adjustable front headrests	■	—	—	—
2-way manually adjustable rear headrests	■	—	■	—
3-spoke, leather and wood trimmed steering wheel	—	■	—	■
3-spoke, leather trimmed steering wheel	■	—	—	—
3-spoke, perforated leather trimmed steering wheel	—	—	■	—
4-way electrically adjustable front butterfly headrests	—	■	—	■
4-way electrically adjustable front headrests	—	■	■	■
4-way electrically adjustable outer rear butterfly headrests	—	■	—	■
4-way lumbar support, driver and front passenger seat	■	■	■	■
4-way lumbar support, rear outer seats	—	■	—	■
Card key	—	■	■	■

■ Available as standard.
 ○ Available as an option.
 □ Available as part of a pack.
 — Not available.

INTERIOR COMFORT AND CONVENIENCE	COMFORT	EXECUTIVE	F SPORT	LUXURY
Digital rear-view mirror	—	■	—	■
Door armrest and console box, L-aniline leather	—	—	—	□
Door armrest and console box, semi-aniline leather	—	■	—	■
Door armrest and console box, Tahara trim	■	—	■	—
Door panel finish, fabric	■	■	■	□
Door panel finish, hand-pleated fabric (Origami style)	—	—	—	□
Door panel finish, Nishijin fabric	—	—	—	□
Door panel finish, semi-aniline leather	—	○	—	■
Driving position memory (seat, steering wheel, outer mirrors) - 3 user profiles	■	■	■	■
Easy entry and exit function, driver seat and steering wheel retracts/returns	■	■	■	■
Electrically folding front passenger headrest	—	—	—	■
Electronic climate control with nanoe® technology	■	■	■	■
Electronic climate control, 2-zone	■	—	■	—
Electronic climate control, 4-zone	—	■	—	■
Extending seat cushion, driver and front passenger seat	—	■	■	■
F SPORT exclusive front seats	—	—	■	—
Front massage seat, driver and front passenger	—	■	—	■
Front passenger seat position memory - 3 user profiles	■	■	■	■
Heated front seats	■	■	■	■
Heated rear seats	—	■	■	■
Heated steering wheel	■	■	■	■
Inlays, choice of wood styles	■	■	—	—
Inlays, Art Wood Organic	—	○	—	○
Inlays, Haku	—	—	—	□
Inlays, Kiriko Glass	—	—	—	□
Inlays, Laser Cut Special Open Pore Ash	—	○	○	■
Inlays, Naguri-Style Aluminium	—	—	■	—
Leather trimmed gearshift knob	■	■	—	■
Machined aluminium sports pedals	—	—	■	—
Outer rear passenger seat position memory - 2 user profiles	—	■	■	■
Paddle-shift controls	■	■	■	■
Perforated leather trimmed gearshift knob	—	—	■	—
Rear massage seat, outer rear seats	—	—	—	■
Rear quarter window sunshades, electric	—	■	—	■
Rear relaxation seat on passenger's side	—	—	—	■
Rear seats, fixed	■	—	■	—
Rear side window sunshades, electric	—	■	—	■
Rear window sunshade, electric	■	■	■	■
Rear-view mirror, electro chromatic (auto-dimming)	■	■	■	■
Roof lining, Alcantara®	—	■	■	■
Roof lining, fabric	■	—	—	—
Scuff plates, stainless steel with LEXUS inscription	■	■	■	■
Tyre repair kit	■	■	■	■
Upholstery, F SPORT leather	—	—	■	—
Upholstery, L-aniline leather	—	—	—	□
Upholstery, leather	■	—	—	—
Upholstery, semi-aniline leather	—	■	—	■
Ventilated front seats	—	■	■	■
Ventilated rear seats	—	■	—	■
Windscreen de-icer	■	■	■	■

PACKS	COMFORT	EXECUTIVE	F SPORT	LUXURY
Crystal package	–	–	–	□
Door panel finish, hand-pleated fabric	–	–	–	□
Door inlays, Kiriko Glass	–	–	–	□
Nishijin-Haku package				
Door panel finish, Nishijin fabric	–	–	–	□
Inlays, Haku	–	–	–	□
L-aniline leather package	–	–	–	□
Door armrest and console box, L-aniline leather	–	–	–	□
Door panel finish, fabric	■	■	■	□
Inlays, Laser Cut Special Open Pore Ash	–	–	–	■
Upholstery, L-aniline leather	–	–	–	□

- Standard on specific grade(s).
- Available as (part of) a pack.
- Available as an option.
- Not available.

TECHNICAL DATA

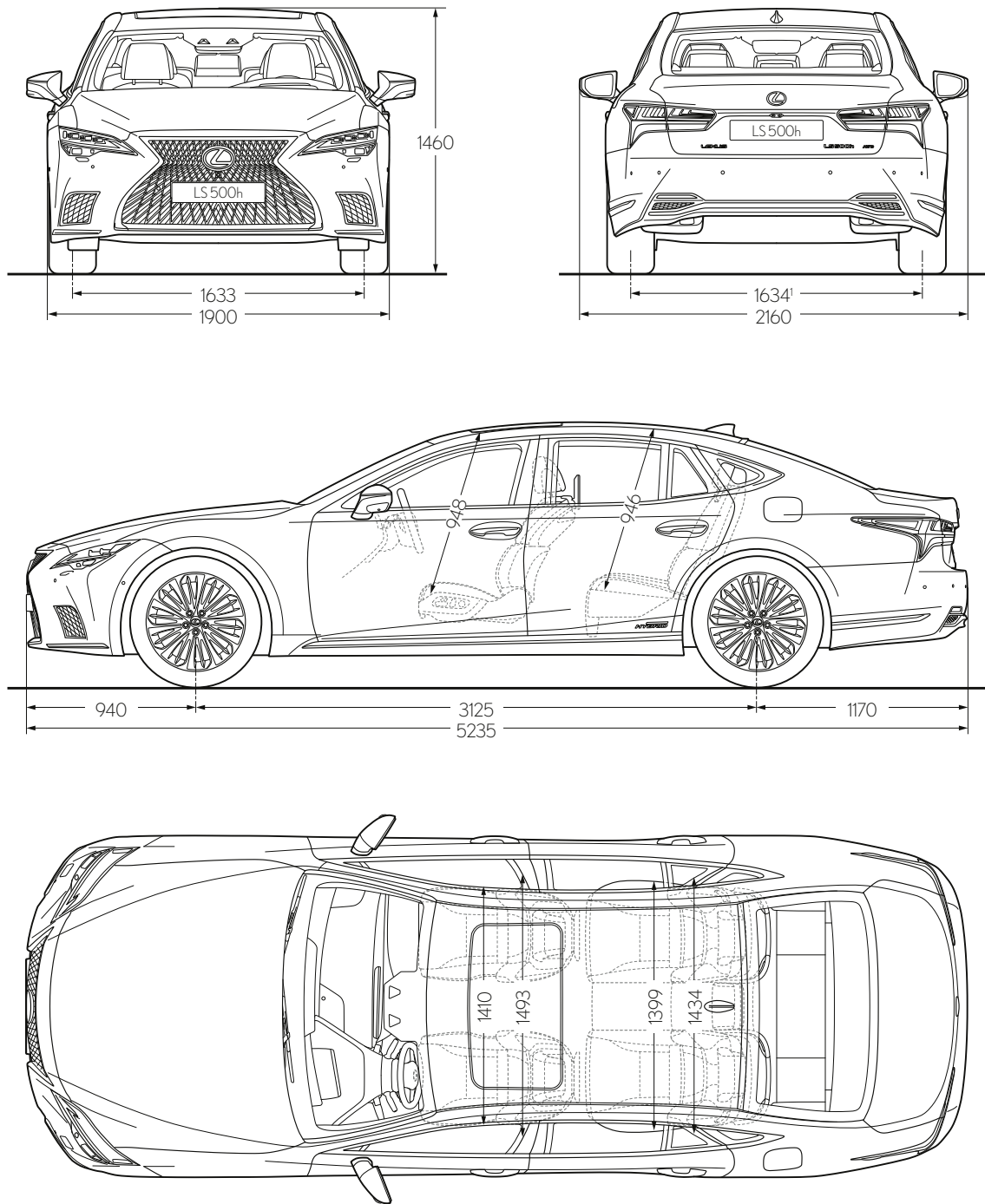
ENGINE		LS 500h AWD
Capacity (cm ³)		3456
Cylinders / Valves		V6 / 24
Maximum power (DIN hp @ rpm)		296 @ 6600
Maximum power (kW @ rpm)		218 @ 6600
Maximum torque (Nm @ rpm)		350 @ 5100
ELECTRIC MOTOR		
Type		AC synchronous, permanent magnet
Maximum power (DIN hp)		179
Maximum power (kW)		132
Maximum torque (Nm)		300
TRANSMISSION		
Type		Multi Stage Hybrid
Drive		All-Wheel Drive
TOTAL SYSTEM OUTPUT		
Total power (DIN hp)		359
Total power (kW)		264
PERFORMANCE		
Maximum speed (km/h)		250
Acceleration 0-100 km/h (s)		5.5
FUEL CONSUMPTION (l/100 km)		
Combined		from 9.3 to 9.5
CO ₂ EMISSIONS (g/km)		
Combined		from 211 to 216
EMISSION STANDARD		
Euro Class		Euro 6d-ISC-FCM
WEIGHTS (kg)		
Gross vehicle		2800
Kerb (min. - max.)		2270 - 2410
CAPACITIES* (l)		
Luggage volume		430
Fuel tank capacity		82

The fuel consumption and CO₂ values are measured in a controlled environment on a representative production model, in accordance with the requirements of the new WLTP European Regulation EC 2017/1151 and its applicable amendments. For each individual vehicle configuration, the final fuel consumption and CO₂ values may be calculated based on the ordered optional equipment. The fuel consumption and CO₂ values of your vehicle may vary from those measured or calculated values, as driving behaviour as well as other factors (such as road conditions, traffic, vehicle condition, tyre pressure, load, number of passengers, etc.) have an influence on a car's fuel consumption and CO₂ emissions. For more information regarding the new WLTP test method, please visit: www.lexus.eu/wltp#nedc

* Luggage volume is calculated as per the VDA method.

Please note: further Technical Data, including any updates, can be found at www.lexus.ee / www.lexus.lv / www.lexus.it / www.lexus.sw / www.lexus.fi / www.lexus.no / www.lexus.dk

TECHNICAL DATA



¹Figure quoted is for All-Wheel Drive models. For All-Wheel Drive F SPORT models, the figure is 1614.

More about the new LS:

lexus.ee/LS

lexus.lv/LS

lexus.lt/LS

lexus.sw/LS

lexus.fi/LS

lexus.no/LS

lexus.dk/LS

youtube.com/LexusEurope

twitter.com/Lexus_EU

© 2020 Lexus Europe* reserves the right to alter any details of specifications and equipment without notice. Details of specifications and equipment are also subject to change to suit local conditions and requirements. Please enquire at your local Lexus Authorised Retailer of any such changes that might be required for your area.

Note: vehicles pictured and specifications detailed in this brochure may vary from models and equipment available in your area. Vehicle body colour might differ slightly from the printed photos in this brochure.

For further information please visit our website: www.lexus.eu

Taking care of the environment is a priority for Lexus. We take many measures to ensure that during the lifecycles of our vehicles – from design, production, distribution, sales and service to end-of-life – their environmental impact is minimised. Your retailer will be happy to provide more information on end-of-life vehicle requirements.

* Lexus Europe is a division of Toyota Motor Europe NV/SA.

Printed in Europe, November 2020

