

# LBX



 **LEXUS**  
EXPERIENCE AMAZING

"Aiming to overturn the preconception that 'small is inferior', we have created an electrified luxury car that's sublimely natural to drive with a design that's both elegant and cool."

KUNIHICO ENDO, LBX CHIEF ENGINEER

# EVERYTHING BUT ORDINARY

THE EXTRAORDINARY NEW LEXUS LBX BREAKS THE LUXURY CAR MOULD, WITH A PREMIUM YET SHARP DESIGN AND CHOICE OF FOUR STUNNING ATMOSPHERES.

Because it's always been that way doesn't mean it should stay that way. That was our mindset when creating the LBX electrified compact SUV. A Lexus through and through, this car is crafted to defy convention. Showcasing standout looks, its super-refined yet fun to drive performance and class-redefining luxury turn the perception of the compact car on its head.

## ELEGANT, RELAX, EMOTION, COOL

Firstly, it's more than one car. Four distinct styles, or atmospheres, allow you to choose an LBX that best fits your lifestyle. COOL reflects the creative in you, EMOTION brings out your passion for sport and adventure, RELAX mirrors your sensitive side while ELEGANT is a persona with a penchant for style.

## BOLD LEXUS SPINDLE DESIGN, LARGE 18" WHEELS

In city streets, the new LBX excites from the moment you set eye on it. Its sculpted proportions and vibrant lines give pure enjoyment from every angle. Witness its new Lexus spindle design, 18" alloys and vibrant Lexus rear styling. Walk away and you'll notice the compact cabin design, prominent wings and bi-tone roof with black C-pillar.

## FLAGSHIP TECHNOLOGY, UNDENIABLY LEXUS

Under its aerodynamic skin, the LBX is powered by a pioneering next-generation Lexus Self-Charging Hybrid which lets you drive in EV mode for up to 50% of the time. On board you'll discover features normally only offered on flagship models, like the pioneering Lexus Safety System + and 12.3" Tazuna cockpit.

In so many ways, our designers, engineers and Takumi masters have created a full-blooded Lexus in a compact car format.

[www.lexus.eu/LBX](http://www.lexus.eu/LBX)





# EXQUISITELY CRAFTED FOR YOU

CREATED TO BE DIFFERENT, WITH ITS JAPANESE  
OMOTENASHI DESIGN AND TAKUMI CRAFTSMANSHIP, THE  
LBX IS VERY MUCH A LEXUS AT HEART.

Sitting into the new LBX ELEGANT, you can't help feeling someone's been there before you, leaving no stone unturned to make sure your experience behind the wheel will be an exceptional one.

## TAKUMI CRAFTSPEOPLE WITH OVER 15 YEARS OF EXPERIENCE MAKES IT A LEXUS

The sense of luxury here extends beyond the sumptuous leather upholstery and hi-tech equipment. There's luxury in the craftsmanship that is all around you. This is the work of the Takumi - the famed Lexus artisans who pour over every centimetre of your LBX to ensure the finished product is exquisitely finished. Honed over at least 15 years, their commitment to quality is what makes this car a Lexus. Witness the fine detail in the seat stitching, the Tsuyasumi woodgrain ornamentation and the intricate pattern which adorns the cup holder area, with a shiny charcoal effect creating a pleasing look with intricate wood-like veins.

## DISCOVER 'OMOTENASHI', THE ANCIENT JAPANESE ART OF HOSPITALITY

This is more than craftsmanship. This is 'Omotenashi', an ancient Japanese art of hospitality which seeks to anticipate a guest's needs even before they do. It is a spirit which guides all design at Lexus. Inside the LBX, you see it for example in the cabin illumination, conveyed through a choice of 64 carefully selected colours, which express the emotions felt when witnessing beautiful natural phenomena. You see it too in vegan interiors, where seats, steering wheel, door trim and dashboard are free of animal-derived materials. And in Hey Lexus intelligent voice control, which even recognises who is talking.

## LEXUS DIGITAL KEY

The LBX's new Digital Key enables a smartphone to be used instead of a physical key. This allows access for up to 5 different LBX drivers or families using a single smartphone.

The new LBX truly is a mould-breaker. Exuding fresh thinking at every turn, yet firmly rooted in the rich luxury tradition that is Lexus.





# DISCOVER YOUR HAPPY PLACE

HERE SOPHISTICATED LUXURY AND HIGH-TECH SAFETY FUSE  
TO CREATE AN AMBIENCE OF WELL-BEING.

Your car is your sanctuary. Your personal space, your happy place. And inside the LBX RELAX, like all LBX models, it's the attention to detail that wins you over. The deep, satisfying sound of the door closing. The allure of the semi-aniline leather with its distinctive stitching, conveying a level of premium quality that goes beyond your expectations and beyond the compact class. At the same time it endows the cabin with a calmness and glamour that reflect both your style and your mood.

## 13-SPEAKER MARK LEVINSON® SOUND, CLIMATE CONCIERGE

The mood won't be broken by excessive noise. That's thanks to the LBX's whisper-quiet Lexus Self-Charging Drive and premium design features like sound-damping on the wheel arches. This reduces both road and rain noise, as does insulation under the carpet. All the while Climate Concierge discharges minus-ion nanoe™ X particles, helping inhibit viruses and bacteria on one hand and moisturising your hair and skin on the other.

## CLASS-LEADING LEXUS SAFETY SYSTEM +

That is not all that relaxes you. The 3rd generation Lexus Safety System + gives you constant support, monitoring the road ahead, alerting you of impending danger and, where required, intervening in milliseconds to avoid a collision. LSS+ can help you avoid more accidents than previously, whilst the new Proactive Driving Assist supports you in driving more safely.

Meanwhile, the award-winning Safe Exit Assist prevents doors from opening when traffic like cars or bicycles is approaching too close from behind, while AHS headlights give you maximum visibility without blinding oncoming traffic.

## AN INTELLIGENT POINT OF VIEW

For easier driving in confined spaces, the Panoramic View Monitor creates a virtual 3D image of the car, displaying the scene from above, to assist close-quarter manoeuvring. The LBX also sports a Remote Parking system for manoeuvring in tight spaces.

There's a special feeling inside the new LBX, a sense of well-being that you thought was the preserve of luxury sedans or large SUVs.





# ELECTRIFIED TO BREAK FREE

IT'S TEMPTING TO JUST KEEP DRIVING IN THE LBX, ENJOYING  
THE CITY STREETS AND WINDING COUNTRY ROADS.

The LBX is not a car to be caged; from the ground up it was designed for agile and nimble driving around city streets. It wants to explore and inspires its driver to do the same - even before starting the car.

## ATHLETIC PROPORTIONS

Looking perfectly at home in the urban jungle, the LBX EMOTION's bi-tone exterior, contrasting with the black cabin, hints at its sportiness from the off. So, too, do the dynamic proportions of that athletic body. It's compact, ideal for the city, yet with an impressive stance that's up for adventure. The black interior with red stitching adds to the sense of energy.

## NEXT GENERATION LEXUS SELF-CHARGING HYBRID

The promise of performance is more than skin deep. Under the bonnet, a next-generation Lexus Self-Charging Hybrid combines a highly efficient 1.5-litre petrol engine with a high-output electric motor. This delivers both dynamic performance on winding roads and peerless hybrid smoothness around urban streets. And the combination of an advanced nickel metal hydride battery, lightweight materials and clever packaging means you're saving on fuel and CO<sub>2</sub> emissions.

## TAKUMI TESTED, SILKY SMOOTH

On the road, seated in the low driving position yet with excellent forward vision, you're seamlessly connected to a car that has a distinctly Lexus feel to it, with class-leading low levels of road noise, vibration and harshness. The smooth, responsive acceleration and cornering are the fruits of countless hours of fastidious effort from the Lexus engineers and Takumi craftspeople on the brand new Lexus Shimoyama testing track. The aerodynamics even extend underneath the car, with the dimpled undercover contributing to the LBX's excellent straight line stability during high-speed driving.

## ENJOY THE LEXUS DRIVING SIGNATURE

The very rigid body and low centre of gravity ensure confident handling, with the unwavering assurance that the LBX will steer exactly where you intend. Carefully tuned to deliver a Lexus Driving Signature of fun and comfortable performance, you'll sense the precise linearity of the controlled drive, braking and class-leading road holding.











# WHERE PREMIUM EMBRACES CASUAL

INSIDE THE LBX FEELS ROOMY AND FEATURES FUTURISTIC  
DESIGN, BESPOKE MATERIALS AND CLASS-LEADING  
EQUIPMENT LEVELS.

The interior design of the LBX COOL is instantly inviting – inviting you to be yourself, with a premium casual vibe as opposed to the restrictive formality that pervades most luxury cars. This is luxury that liberates. For a special look, you can customise your LBX to best match your own personality from an array of interior styles, tones and textures, alongside 9 super-sharp body colours.

## DRIVER-FOCUSSED COCKPIT

The simplicity of elements like the instrument panel and the generous field of view lends the space an expansive feel that recalls a larger class of car. Behind the hand-stitched steering wheel, with your hand on the exquisitely finished centre console, you'll discover the driver-centred 'Tazuna' cockpit and its comforting embrace. For a luxury feeling of uncluttered space, controls such as the large Head-Up Display and 12.3" LCD instruments are precisely positioned to ensure relaxed concentration on the road ahead. Then, there's the varied ambient lighting from a palette of no fewer than 64 colours, imbuing the cabin with an ambience tailored to your mood.

## EXQUISITE INTERIORS

Beautifully purposeful and intuitive, inside the LBX's clean design contributes to a feeling of spaciousness throughout. COOL has an ultrasuede/leather interior with distinctive Takumi-crafted copper stitching. Here the finest quality materials in the hands of experienced artisans create an environment of contemporary luxury that eschews outmoded ornamentation.

This is a new kind of Lexus luxury. Condensed LBX COOL design, with no compromises.





# WELCOME TO LEXUS LINK

A WORLD OF MULTIMEDIA AND BREAKTHROUGH  
CONNECTIVITY ENRICHES YOUR LIFE WITH THE LBX  
IN A MYRIAD OF WAYS.

With the new LBX, luxury goes beyond the sumptuous seats. Luxury is equally the peace of mind that comes from knowing you will reach your destination on time, in the most enjoyable, stress-free manner. And it is the seamless interaction of audio, navigation and online services for driver and passengers, enhancing each journey you make.

Welcome to Lexus Link Multimedia, created to complement our unique 'Omotenashi' service philosophy. With a 9.8" touchscreen, advanced voice recognition and smartphone integration, Lexus Link Multimedia offers an exceptionally fast and easy-to-use in-car experience. Meanwhile, the Lexus Link app on your smartphone helps you track journeys, schedule a service or even improve your driving style.

## SETTING THE NEW BENCHMARK FOR CONNECTIVITY

The clever Lexus Link+\* app boasts an array of services as standard. Driving Analytics tracks your journeys and highlights business trips. Find my Car guides you back to your car. You even receive notifications if you leave a window open or forget to switch off the headlights. From the comfort of your home, you can remotely defrost the windscreen, pre-set the air conditioning temperature or even lock and unlock your car.

## INTUITIVE 9.8" TOUCHSCREEN

Lexus Link Multimedia on the new LBX has been designed for exceptional speed and ease of use. At its heart is the 9.8" touchscreen. It's perfectly positioned for easy interaction. As well as accessing information like navigation, audio and climate control, you can also display your smartphone\*\* apps via Android Auto® or wireless Apple CarPlay®.

## LEXUS VOICE ASSISTANT

Artificial Intelligence and the cloud work together in the Lexus Voice Assistant, which spares you grappling with buttons while you're concentrating on the road ahead. The system understands natural language and the context of statements such as "I'm hungry" or "I'm cold" and can even recognise which passenger is speaking. Without taking your hands off the wheel, Lexus Voice Assistant allows you to interact in more than 100 different ways across phone, navigation, audio, vehicle controls such as AC or seats, and cloud.

\* Lexus Link+ available as of October 2023.

\*\* Compatible smartphones only.

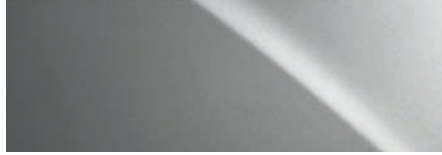




**SONIC WHITE** | 085



**SILVER** | 1F7



**CEMENT GREY** | 1H5



**SONIC GREY** | 1L1



**BLACK MICA** | 209



**SONIC COPPER** | 4Y5



**RUBY** | 3U5



**PASSIONATE YELLOW<sup>1</sup>** | 5A3



**DARK BLUE** | 8W7



**SONIC WHITE /  
ASTRAL BLACK<sup>2</sup>** | 2YM



**SILVER /  
ASTRAL BLACK<sup>2</sup>** | 2LB



**CEMENT GREY /  
ASTRAL BLACK<sup>2</sup>** | 2YN



**SONIC GREY /  
ASTRAL BLACK<sup>2</sup>** | 2YH



**RUBY /  
ASTRAL BLACK<sup>2</sup>** | 2TB



**SONIC COPPER /  
ASTRAL BLACK<sup>2</sup>** | 2YF



**PASSIONATE YELLOW /  
ASTRAL BLACK<sup>2</sup>** | 2PQ



**DARK BLUE /  
ASTRAL BLACK<sup>2</sup>** | 2VT



<sup>1</sup> Solid colour.

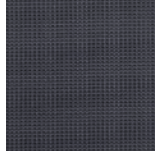
<sup>2</sup> Bi-tone bodycolours are standard on Emotion and Cool atmospheres, and not selectable on any other grades. Astral Black and Passionate Yellow are solid colours. Original Edition is only selectable with Bi-tone Sonic Grey, Sonic Copper, Dark Blue or monotone Black Mica.

Please note: due to printing variances, actual paintwork colours may vary slightly from those illustrated.



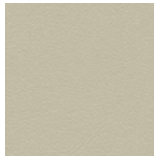


**FABRIC<sup>1</sup>**

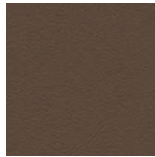


Greyscale

**VEGAN TAHARA<sup>2</sup>**



Ammonite Sand



Forest Brown

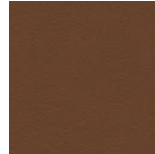


Black<sup>3</sup>

**SEMI-ANILINE LEATHER<sup>4</sup>**

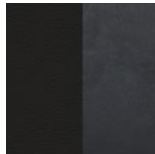


Black



Saddle Tan

**LEATHER TRIMMED ULTRASUEDE<sup>5</sup>**



Black & Dark  
Grey

<sup>1</sup> Greyscale fabric is standard on LBX atmosphere.

<sup>2</sup> Tahara upholstery is standard on Elegant atmosphere.

<sup>3</sup> Perforated Tahara upholstery in Black with Red stitching is standard on Emotion atmosphere and optionally available in a pack on Elegant atmosphere.

<sup>4</sup> Semi-aniline leather is standard on Relax atmosphere.

<sup>5</sup> Leather trimmed Ultrasuede upholstery in Black & Dark Grey with Copper stitching is standard on Cool atmosphere. An exclusive variant with Black stitching is standard on Original Edition

## TECHNICAL DATA

ENGINE		LBX FWD (AWD)
Capacity (cm <sup>3</sup> )		1490
Cylinders / Valves		L3 / 12
ELECTRIC MOTOR		
Type		AC synchronous, permanent magnet
TRANSMISSION		
Type		Electronic-Continuously Variable Transmission
Drive		Front-Wheel Drive (E-FOUR)
TOTAL SYSTEM OUTPUT <sup>1</sup>		
Total power (DIN hp)		136
Total power (kW)		100
Maximum torque (Nm)		185
PERFORMANCE		
Acceleration 0-100 km/h (s)		9.2
FUEL CONSUMPTION <sup>2</sup> (l/100km)		
Combined		4.7 - 4.3 (4.9 - 4.5)
CO <sub>2</sub> EMISSIONS <sup>2</sup> (g/km)		
Combined		107 - 100 (113 - 105)
EMISSION STANDARD <sup>2</sup>		
Euro Class		EURO 6d-ISC-FCM
WEIGHT (kg)		
Gross vehicle		1755 (1820)
Kerb weight (min. - max.)		1280 - 1350 (1365 - 1415)
DIMENSIONS		
Length (mm)		4190
Width (mm)		1825
Height (mm)		1545

<sup>1</sup> Combined engine and electric motor(s).

<sup>2</sup> The fuel consumption and CO<sub>2</sub> values are measured in a controlled environment on a representative production model, in accordance with the requirements of the new WLTP European Regulation EC 2017/1151 and its applicable amendments. For each individual vehicle configuration, the final fuel consumption and CO<sub>2</sub> values may be calculated based on the ordered optional equipment. The fuel consumption and CO<sub>2</sub> values of your vehicle may vary from those measured or calculated values, as driving behaviour as well as other factors (such as road conditions, traffic, vehicle condition, tyre pressure, load, number of passengers, etc.) have an influence on a car's fuel consumption and CO<sub>2</sub> emissions. For more information regarding the new WLTP test method, please visit: [www.lexus.eu/wltp#nedc](http://www.lexus.eu/wltp#nedc)  
All technical figures, including CO<sub>2</sub> emissions and fuel consumption are target values subject to homologation.

All figures listed are preliminary, tentative values subject to change without notice. Specifications shown in this brochure are based upon the latest available information at the time of printing. Further technical data, including any updates, can be found at [www.lexus.eu](http://www.lexus.eu).





# BE OUR GUEST

HOW WE TREAT OUR CUSTOMERS IS  
GUIDED BY AN ANCIENT JAPANESE  
PHILOSOPHY OF HOSPITALITY.

Translated from the Japanese as 'hospitality and polite service', Omotenashi is about much more than excellence of service; it is an ancient concept centred around anticipating the needs of another, even before they arise. Omotenashi influences how we design and engineer our cars at Lexus, and equally how we treat you, the Lexus owner. Not just at the point of sale but over the life of your car. We want you to feel valued in every interaction you have with us. To feel more than a customer.

Whether as a private or fleet driver, you'll experience Omotenashi each time you visit our showrooms. In the warm reception on hand from friendly staff intent on welcoming you as if you were a guest in their home. In the inviting atmosphere and impressive facilities of the lounge, where you can avail of refreshments, catch up on news, enjoy high-speed Internet or carry on with your work. And in the knowledge that our Lexus technicians are working with precision and efficiency to get you back on the road with minimum interruption to your day.

## PEACE OF MIND WITH LEXUS RELAX\*

Lexus Relax provides you with complete peace of mind even after your manufacturer's warranty expires. Drive away carefree with an extra 12 months warranty every year you service your Lexus with us.

## LEXUS EASY MOBILITY SOLUTION\*

From financing to insurance, maintenance and even tyres, the Lexus Easy flexible mobility solution is the easy way to drive and look after a Lexus.

It's not only cars that make Lexus unique. It's the philosophy which permeates everything we do and which extends to an ownership experience that makes you feel special. Just as a guest should.

\* Lexus Relax and Lexus Easy are not available for all markets.  
Please enquire at your local Lexus Authorised Retailer.



## DISCOVER MORE ONLINE

Find out more about the new LBX and even reserve your car online. Take time to explore which equipment grade best suits your lifestyle, learn about our world-class service and finance offerings and sign up to our regular newsletter. If you're interested in how the new LBX feels to drive, you can also book a test drive online with your local Lexus Retailer.

<http://www.lexus.eu/lbx>

©2023 Lexus Europe\* reserves the right to alter any details of specifications and equipment without notice. Details of specifications and equipment are also subject to change to suit local conditions and requirements. Please enquire at your local Lexus Authorised Retailer of any such changes that might be required for your area.

Note: vehicles pictured and specifications detailed in this brochure may vary from models and equipment available in your area. Vehicle body colour might differ slightly from the printed photos in this brochure.

For further information please visit our website: [www.lexus.eu](http://www.lexus.eu)

Taking care of the environment is a priority for Lexus. We take many measures to ensure that during the lifecycles of our vehicles - from design, production, distribution, sales and service to end-of-life - their environmental impact is minimised. Your retailer will be happy to provide more information on end-of-life vehicle requirements.

\* Lexus Europe is a division of Toyota Motor Europe NV/SA.

Printed in Europe, July 2023

