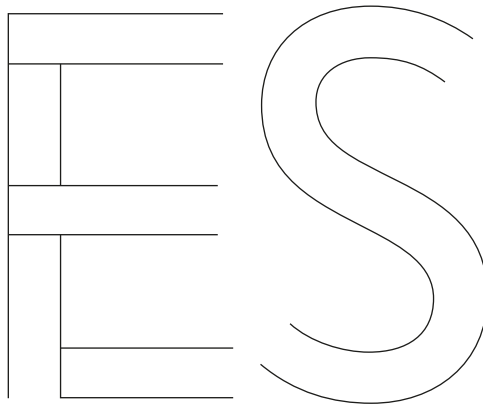


ES



The ES 300h Self-Charging Hybrid





At Lexus, we have a lot to be proud of. A leader in luxury car electrification for nearly 20 years. Over 2 million Lexus Self-Charging Hybrids on the road across the globe. Cars that stand out for their sophistication, proven quality and award-winning reliability.

These are impressive facts, but for Lexus, performance is more than just numbers. And electrification is more than just batteries and motors.

It's the chance to define a new kind of driving pleasure, where each journey radiates confidence, control and comfort. With your Lexus responding instantly to your every move, you'll enjoy a luxury that is personal, a luxury rooted in the uniquely crafted connection between car and driver.

Just drive the ES 300h Lexus Self-Charging Hybrid sedan and you'll know what we mean.

This is Lexus Electrified.



01. FEEL STRIKING
Pages 04-07



02. FEEL EXHILARATED
Pages 08-11



03. FEEL LUXURIOUS
Pages 12-15



04. FEEL CONNECTED
Pages 16-17



05. FEEL PIONEERING
Pages 18-21



06. MODEL
Pages 22-25



07. FEATURES
Pages 26-35



08. F SPORT
Pages 36-37



09. ACCESSORIES
Pages 38-39



10. COLOURS
Pages 40-43



11. TECHNICAL DATA
Pages 44-45



12. FEEL VALUED
Pages 46-47







TECHNOLOGY MEETS ARTISTRY. The roominess, luxury and practicality are all you would expect of an executive sedan with the Lexus signature 'L' proudly showcased on its front grille. As you walk around the graceful curves and lines, the elegant proportions that lend the ES 300h its enticing profile, and the intricate light configuration, you sense a fusion of technology and human artistry. Each element contributing to a level of refinement that makes this executive driving at its best. And makes you feel your best in turn.

Provocation finds fullest expression in the thrilling ES 300h F SPORT, with its purposeful 19" wheels, exclusive front bumper design and jet black mesh grille – a grille which took months to craft using complex 3D modelling techniques. Tempting though it is, this is not a car to sit back and admire for its contemporary styling. The F SPORT is to be appreciated on the open road.

DARINGLY ELEGANT

Its coupé-like profile lends a provocative character to a car that exemplifies sophistication inside and out.

From the moment your eyes are drawn to it, the daring front grille and striking triple LED headlights of the ES 300h add a provocative edge to an executive sedan that has style and sophistication written all over it. The individual character of the ES owes much to its sleek roofline, inspired by a sports coupé as much as a spacious sedan, accentuating the car's low stance and enhanced aerodynamics. Distinctive wheels and Sonic Grey paintwork seem the perfect complement to the smart sportiness of this latest ES 300h, a Lexus that steps outside the conventional categorisation of an executive sedan. It's an intent that spills over to the driver, instilling instant confidence in the person behind the wheel.





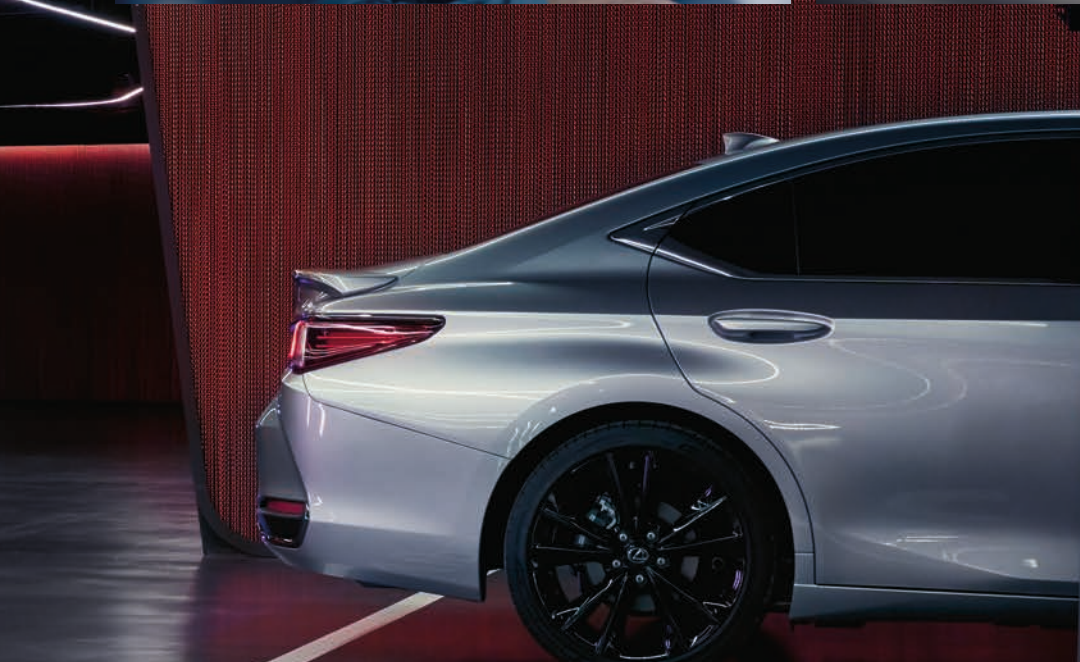
01



02



03



- 01 Finished in Sonic Grey paint, the Lexus signature grille is flanked by sleek LED lights
- 02 Easier to use, the 12.3" touchscreen has been moved closer to the driver
- 03 Creating a dynamic look, the ES 300h F SPORT thrills with 19" wheels and jet-black grille



SAVOUR THE MOMENT

Impeccable road manners combine with an ultra-responsive Self-Charging Hybrid powertrain for memorable moments at the wheel.



The alluring coupe-like silhouette points to an executive sedan that yearns to be driven. And the moment will not disappoint. Charging itself as you drive, slow down or brake, the acclaimed 4th generation Lexus Self-Charging Hybrid powertrain delivers rapid linear acceleration precisely when you require it, without the need to ever plug in. But it's how it feels that really impresses. The near silence of driving in EV mode. The ultra-refined cruising on the motorway.

Exuding power and control, the ultra-smooth Lexus Self-Charging Hybrid is now more serene than ever. No detail has been overlooked in the quest for a drive befitting the executive nature of this car. Take, for instance, the shutters fitted to the bold grille, that help minimise road noise and turbulence. Or the intelligent use and location of lightweight materials, coupled with the improved rear suspension, that make for exemplary handling stability and ride comfort.

ALWAYS IN CONTROL. Now feel the car's pedals at your feet. They have been redesigned for a more engaging connection between driver and car as you accelerate or brake. Using Drive Mode Select to choose your preferred driving style, you can enjoy driving dynamics that were tuned and perfected by our elite team of engineers and Takumi master drivers. Taking corners with an assuredness that inspires, the ES 300h feels rock solid, its straight-line stability reassuring wherever you drive. Excitement is never at the expense of control.

On the open road, it's as if both car and driver are shedding their business suits for something more free, more relaxing, expressing their true character through the range of emotions that make up a journey at the wheel of the ES 300h. Confidence, fun, exhilaration.

Immersed in the driving experience, it is easy to forget that the ES 300h is more economical and efficient than most conventional executive sedans. You're enjoying significant fuel savings and low emissions, without having to worry about driving range.







THE BEAUTY WITHIN

Experience the interior harmony of the expertly crafted ES cabin.



01



02



03

To sit at the wheel of the ES 300h is to experience a special sense of interior harmony. Firstly, there's the low yet ergonomic seating position and the Takumi-sculpted steering wheel, both creating a seamless connection between driver and car. There's the sleek dashboard with instruments like Head-up Display positioned so you can concentrate on the road ahead. It's like you're in the journey even before the Lexus Self-Charging Hybrid powertrain has set you in motion.

All around, you will be struck by the attention to detail and craftsmanship which are the hallmarks of the famed Lexus 'Takumi' artisans. Where you can't see it, you can feel it. The sumptuous upholstery, is now available in stylish new colour like Ammonite Sand. Exquisite inlays such as the new Dark Bamboo typify the handcrafted appearance of the cabin. The classic black finish to the dashboard. All blending together serenely with a feeling of roominess to create a supremely relaxing environment that recalls the calmness and comfort of a living room.

PASSENGER COMFORTS DESIGNED TO DELIGHT. Your passengers will feel it too. In the near one-metre rear legroom they enjoy in seating which can be adjusted and heated from a panel on the centre armrest. In the luxury of Lexus Climate Concierge, which creates the ideal climate to suit passengers front and rear. And in the amazing 17-speaker Mark Levinson® Premium Surround Sound system which was specially developed for the ES, and is the perfect complement to an outstandingly quiet cabin, again the product of endless hours of audio work by sound engineers from Lexus and Mark Levinson®.

Inside the exciting ES 300h F SPORT, relaxation turns to anticipation. The striking Tahara sports seats, inspired by those in the LC coupé, and unique cabin finishes all signal the sporting intentions of this special car, yet provide a level of luxury that is distinctly Lexus.

FEEL SOPHISTICATED



"It's a feeling we try to create in Lexus cars, to make the owner and passengers feel totally at home."

Yasuo Kajino,
ES Chief Designer



04

- 01 In the driver-focused cockpit, you'll enjoy sumptuous seats stitched by our Takumi craftspeople
- 02 Famed 'Takumi' artisans stitch upholstery that typifies the handcrafted appearance of the cabin
- 03 The 17-speaker Mark Levinson® PurePlay system delivers the purest audio experience yet
- 04 Enjoy over one metre of rear legroom in electrically adjustable heated seats





SMART THINKING

Technology is everywhere in the ES, making you feel safer and more empowered than ever at the wheel.

Whatever grade you choose, the ES 300h envelopes you with more technology than ever before, some of it appearing for the first time in a Lexus and much of it embodying the spirit of Omotenashi. This ancient Japanese philosophy of hospitality, grounded in anticipating another's needs even before they arise, underpins innovations at Lexus. Like an advanced air conditioning system which discharges minute nanoe™ X particles, helping inhibit viruses and bacteria* on one hand, reducing odours** on the other and at the same time moisturising your hair and skin. Or a Digital Side-View Monitor which provides a wide field of vision and clear visibility even in night-time or rainy conditions.



BETTER CONNECTED. The clever Lexus Link app boasts an array of connected services as standard. Driving Analytics tracks your journeys and highlights business trips. Find my Car guides you back to your car. You can receive notifications if you leave a window open or forget to switch off the headlights. And from the comfort of your home, you can remotely defrost the ES's windscreen, activate hazard warning lights or even lock and unlock your car. What's more, with the Premium Connectivity pack, you get cloud-based navigation & Voice Assistant; Road Events & Real Time Traffic information and parking availability.



IN THE SAFEST OF HANDS. Feel reassured with Lexus Safety System + (LSS+), which incorporates advanced features on the ES 300h. Intersection Turn Assist detects oncoming vehicles and crossing pedestrians when turning at an intersection, while Emergency Steering Assist helps guide your steering movements when there is a vehicle, cyclist or pedestrian very close to or in your lane. Another innovation on the ES 300h is curve speed reduction, which automatically decelerates if speed needs to be reduced on a bend while using the Dynamic Radar Cruise Control. The Bladescan® Adaptive High-beam System helps you recognise road users and road signs more clearly and at a greater distance, yet without dazzling oncoming cars.

* More than 99% virus and bacteria inhibition by 1 hour exposure of nanoe™ X. Japan Food Research Laboratories, Report No. 20073697001-0101, 15038623001-0101.

** Odour intensity reduced more than 1.8 by 1 hour exposure of nanoe™ X. Panasonic Corporation Product Analysis Center, Report No. BAA33-150318-M35.

- 01 Intersection Turn Assist on the ES 300h detects oncoming vehicles and pedestrians when turning at an intersection
02 The Digital Side View Monitor provides a better rear side view, especially at night and in the rain



01



02



02

POWERING THE DREAM

In the 1990s, thirsty engines were the unchallenged norm for luxury cars. As the millennium turned, the world was waking up to global warming and the need to reduce emissions through electrification. A new drivetrain solution was required. And the first luxury carmaker to step up to the mark was Lexus.

With all key hybrid components developed and manufactured in-house, our electrified hybrids have proved themselves to be uniquely refined, exhilarating to drive and exceptionally strong.

Two decades on, our dream at Lexus of low-emission luxury travel has long become a roadmap. With each electrified car we launch, the final destination edges ever closer.





A PIONEER AND LEADER IN LUXURY CAR ELECTRIFICATION

Since the launch of our first luxury sedan over 30 years ago, Lexus has become a synonym for exceptional design, quality and refinement. Perhaps most importantly, we're also a pioneer and leader in luxury car electrification. A company that never stops innovating and working to anticipate drivers' needs. It's this unique approach that resulted in the world's first luxury hybrid in 2005 - the RX 400h SUV.



SELF-CHARGING HYBRID, PLUG-IN HYBRID OR ALL-ELECTRIC

Today, Lexus offers six amazing Self-Charging Hybrid models and the majority of premium hybrids on the road bear the Lexus badge. No other luxury carmaker can rival our experience in developing, building, servicing and recycling hybrids. Our Self-Charging Hybrids do not require plugging in and are capable of driving in Electric Vehicle (EV) mode using no petrol.

Spearheading our new 'Lexus Electrified' vision, we introduced the first all-electric Lexus, the UX 300e. Marking the next chapter of electrification, the first Lexus Plug-in Hybrid, the NX 450h+, has extended our electrified line-up even further, along with the RZ 450e that is built on a dedicated electric vehicle platform.



THE FUTURE IS 'LEXUS ELECTRIFIED'

Despite the tremendous success of the Lexus Self-Charging Hybrid range, resting on our laurels is not an option. Which is why we launched the 'Lexus Electrified' vision and the LF-30 'electrified' concept. Created to transform driving enjoyment to the next level, 'Lexus Electrified' is an integrated approach to electric powertrains, advanced posture control and other electrification technologies. Demonstrating our vision, the LF-30 'electrified' concept's bold exterior and driver-centric cockpit embody everything that 'Lexus Electrified' stands for. Benefitting from over two decades of electrification experience, with its four in-wheel electric motors, steering-by-wire and Lexus Advanced Posture Control, it delivers a driving experience like no other.



Discover more: www.lexus.eu/electrified

PIONEERED BY LEXUS



FEEL THE DIFFERENCE OF DRIVING A LEXUS SELF-CHARGING HYBRID

WHAT IS A LEXUS SELF-CHARGING HYBRID?

Combining the power of an ultra-smooth petrol engine with one or more advanced electric motors, Lexus Self-Charging Hybrids have always set the benchmark for electrification of luxury cars. For your convenience, Lexus hybrids charge themselves while you drive, slow down or brake, meaning you never have to plug them in or worry about battery range. Sit back and enjoy an amazing blend of power and control, content in the knowledge that your Lexus is more efficient and is producing fewer emissions than a conventional engine

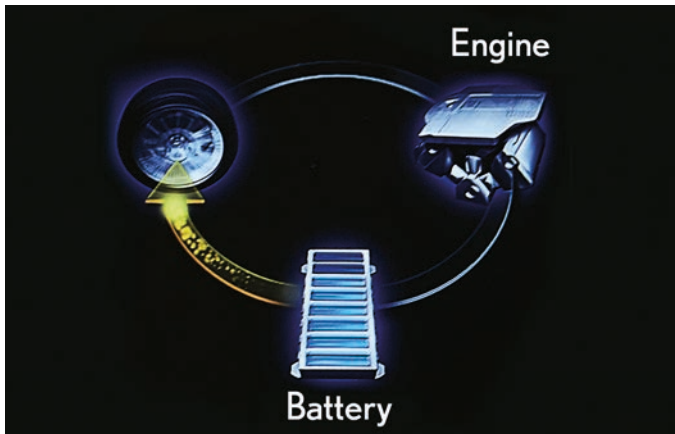
WHY IS ELECTRIFICATION IMPORTANT?

In order to curb greenhouse gases, we believe that effective vehicle electrification is essential. Since the launch of the RX 400h, the world's first electrified luxury car, Lexus has taken the initiative in developing and promoting the widespread use of advanced Self-Charging Hybrids. As well as reducing the emissions of our cars, by 2050 we plan to achieve ever lower CO₂ emissions from all Lexus manufacturing plants and minimise their water usage.

WHAT IS IT LIKE TO OWN A LEXUS HYBRID?

We work hard to ensure your Lexus Self-Charging Hybrid is a joy to drive and own. With over 500,000 Lexus hybrids on European roads today, all are built in a dedicated ultra-modern production plant in Japan to the exacting quality standards that consistently net Lexus hybrids reliability awards across the globe. Aside from the striking smoothness and refinement, you'll appreciate the substantially lower running costs – not just fuel, but reduced expenditure on brakes, tyres and other components, thanks to the regenerative braking and advanced power control systems.

Learn more: www.lexus.eu/hybrid

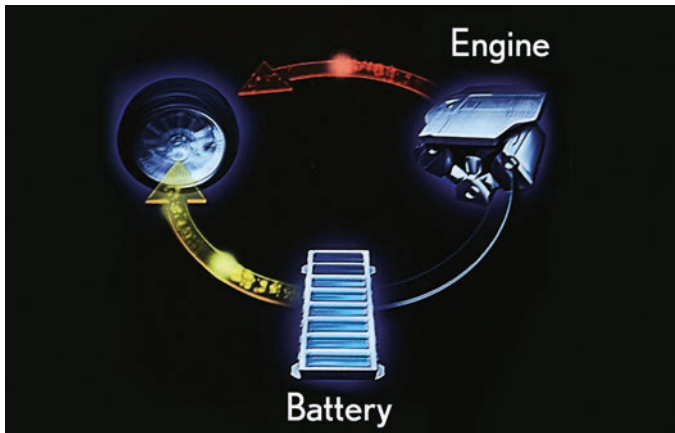
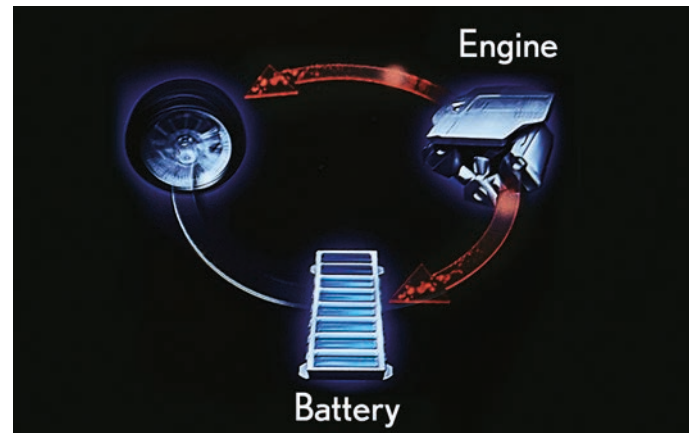


ALL-ELECTRIC AT LOWER SPEEDS

When starting off and at lower speeds, the powerful front electric motor propels the ES 300h, with electric power supplied by the hybrid battery. At this point you are enjoying near-silent 100% electric driving.

NEAR SILENT AT CRUISING SPEEDS

Lexus Self-Charging Hybrids are smooth and relaxing to drive. At higher speeds, the ultra-smooth petrol engine cuts in quietly and receives assistance from the electric motor when required. With the engine running at optimal speed, surplus power can be used to charge the battery. Alongside low emissions and fuel consumption, this near perfect distribution of petrol and electric power also provides the extraordinary driving enjoyment which characterises the ES 300h.

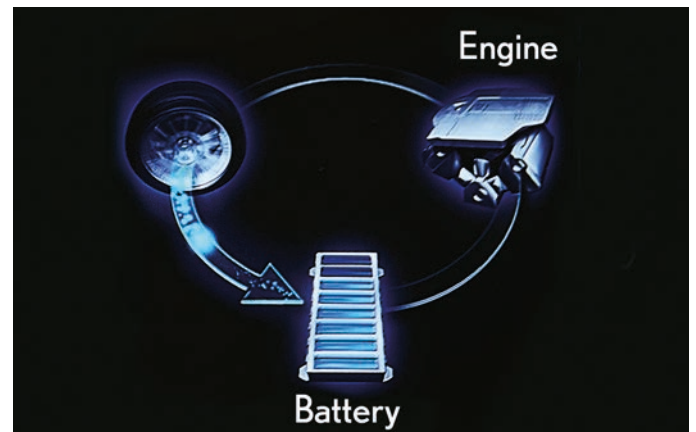


RAPID LINEAR ACCELERATION

Lexus Self-Charging Hybrids are fun to drive. When you accelerate hard, the power of the electric motor instantaneously supplements the ES 300h's 2.5-litre petrol engine. Together they deliver a potent surge of torque, providing rapid linear acceleration precisely when you need it.

REGENERATIVE BRAKING, NO PLUGGING IN

When decelerating, coasting, or when you come to rest, the petrol engine often turns off silently. On braking, or when you take your foot off the accelerator, regenerative braking harnesses your car's kinetic energy (this is wasted in conventional cars). The ES 300h converts this into electrical energy for storage in the hybrid battery, together with power generated whilst driving at higher speeds, which means it never needs plugging in.





THE ES 300h

Powered by a 4th generation Lexus Self-Charging Hybrid system, the ES 300h executive sedan features a chassis that allows for a dynamic exterior design and an extremely refined drive. Inside, it is exceptionally spacious and ultra-quiet, with a level of craftsmanship rarely found in this kind of car. Importantly for all on board, the ES is equipped with the latest Lexus Safety System + that resets benchmarks for safety performance.



01. 4TH GENERATION LEXUS HYBRID DRIVE

Equipped with the very latest Lexus Self-Charging system, the ES 300h boasts extremely refined performance with better fuel efficiency and lower CO₂ emissions (115 g/km*) than conventional petrol- or diesel-powered executive sedans. It couples an ultra-efficient 2.5-litre Atkinson cycle four-cylinder petrol engine with a lighter, more compact electric motor. Total system power is 218 DIN hp/160 kW and combined cycle fuel consumption is from 5.1 l/100 km*.

02. HIGHLY EFFICIENT PETROL ENGINE

The 2.5-litre petrol engine incorporates fast-burn combustion technology that makes it one of the most thermally efficient engines ever built. The result is more power without increasing emissions or fuel consumption. Features that help achieve such impressive results include straight intake ports, increased valve angles and laser-finished valve seats. A variable capacity oil pump, multi-hole injectors, VVT-iE on the intake valves and a variable cooling system also contribute to the engine's impressive heat and combustion management.

03. ULTRA-SMOOTH HYBRID TRANSMISSION

Engineered to smoothly blend power delivered by the electric motor/generator and 2.5-litre engine, this transmission utilises a multi-axle arrangement of the electric motors to reduce the overall length of the transaxle by nearly 30 mm. The traditional planetary gear set is replaced by a parallel shaft gear and a multi-function gear. This incorporates a power split planetary ring gear, parking gear and counter drive gear into one compact unit.

04. COMPACT HYBRID BATTERY

Engineered to last the life of the car, the nickel-metal hydride battery, which powers the electric motor and stores power generated by driving and braking, is positioned underneath the back seat instead of in the boot. This is made possible by minimising the height of the battery and the adoption of a more compact cooling system. Placing the battery under the seat not only frees up luggage space, it also improves weight distribution for better handling.

* WLTP figures. For more information regarding the new WLTP test method, please visit: www.lexus.eu/wltp#nedc







01/02



03



04



05



06



07

01. REAR SPOILER

A bespoke rear spoiler enhances the aerodynamic performance of the ES 300h.

02. REAR BUMPER

The ES 300h rear bumper moulding creates a strong and powerful stance.

03. BI-LED HEADLIGHTS

Providing excellent visibility at night, these energy-saving headlights use the same light source for both high and low beam. They come with distinctive Lexus-signature L-shaped Daytime Running Lights.

04. TRIPLE LED HEADLIGHTS

These headlights consist of three ultra-small LED units that deliver exceptional light distribution in an appealing design. Equipped with sequential turn signal indicators which create a dynamic flow of light to convey the intended change of direction, they come with multi-weather lights to help maintain a good field of view in foggy driving conditions.

05. 17" ALLOY WHEELS

This two-tone design combines a machined finish with a medium-grey metallic coating. Widening towards the rim, the spoke surfaces merge to create overall thicker spokes, enhancing the aerodynamic performance.

06. 18" ALLOY WHEELS

The redesigned two-tone colour scheme combines a machined finish with a dark-grey metallic coating to create a sporty and luxurious look.

07. 18" ALLOY WHEELS

Noise-reducing wheels with a hyper-chrome metallic coating. The wheel size is accentuated by five dynamic multi-spindle spokes.



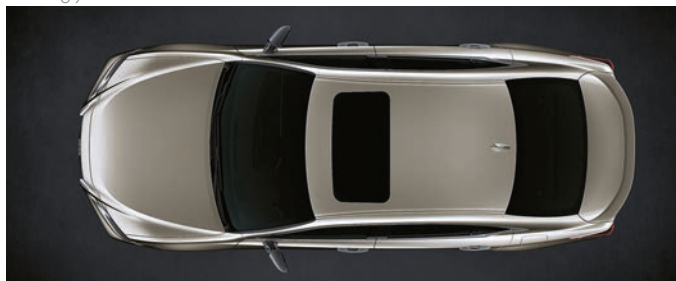
08



09



10



11



12



13

08. CORNERING LIGHTS

LED cornering lights provide extra illumination to the area close to the car when turning left or right or when cornering.

09. MULTI-WEATHER LIGHTS

When fitted with Adaptive High-beam System (AHS), multi-weather lights reduce glare when light is projected forward in foggy conditions at night.

10. COUPÉ-LIKE SILHOUETTE

In a break with past generations, the design features a sleek roofline that emphasises the vehicle's lower stance and smooth aerodynamics.

11. SUNROOF

An electric, tilt and slide, glass sunroof adds a feeling of freedom, spaciousness and light to the ES cabin.

12. HANDS-FREE POWER BOOT LID

For convenient loading and unloading, the ES is available with a hands-free power boot lid. This can be opened and closed simply by moving your foot in front of a sensor located underneath the rear bumper while you are carrying the smart key.

13. STREAMLINED DIGITAL CAMERAS

Designed to improve your rear side view, cameras for the optional Digital Side-View Monitor are housed in slim, aerodynamic casings that complement your car's elegant lines. Smaller than conventional door mirrors, they reduce wind noise and intrude less into your forward-to-side view. The units also have built-in heaters to avoid freezing or misting and are designed to operate in heavy rain or snow.



01/02/03/04



05/06



07



08

01. DRIVER-FOCUSED COCKPIT

To reduce eye movement and distraction, the new 12.3" touchscreen is easier to use, with all important instruments and displays positioned close to their view ahead. For seamless interaction, frequently used controls, such as Drive Mode Select, are concentrated around the driver.

02. S-FLOW CLIMATE CONTROL / CLIMATE CONCIERGE

S-Flow Climate Control intelligently manages the interior climate according to ambient conditions, ensuring excellent comfort and fuel economy. It can even detect if seats are occupied, and regulate the climate accordingly. On the ES 300h, a sensor detects cabin humidity and cabin/windscreen temperature to ensure the windscreen does not fog up. Climate Concierge also discharges minute nanoe™ X particles, helping inhibit viruses and bacteria* on one hand, reducing odours** on the other and at the same time moisturising your hair and skin.

03. STEERING WHEEL

This three-spoke steering wheel combines real leather with finely grained wood and fits snugly and comfortably into your hands. Available with heating for colder mornings, switches control audio, telephone, voice recognition, multi-information display, Dynamic Radar Cruise Control and Lane Tracing Assist.

04. HEATED AND VENTILATED SEATS

Seat heaters are available for the driver and front passenger on the ES. On hot days, taking cold air directly from the air conditioner, the unit helps cool the occupants quickly. In addition, heated rear seats are available.

05. LEATHER SEATS

The smooth leather or semi-aniline leather seats on the ES are an outstanding example of the highest levels of Japanese 'Takumi' craftsmanship. The leather is of impeccable quality and the stitching is executed with immense precision.

06. FRONT SEAT ADJUSTMENT

The ergonomic driving position reduces fatigue and provides an excellent feeling of envelopment. Up to 16-way seat adjustment mechanisms allow various driving positions for a wide range of drivers (up to 14-way for front seat passengers). For long journeys, up to 4-way lumbar support adjustment is available on the Executive and Luxury grades.

07. REAR SEAT CONTROL PANEL

A control panel allows rear seat passengers to operate the air conditioning, audio, rear seat heater, rear seat reclining and sunshade.

08. REAR SUNSHADE

To enhance comfort in hot weather, a powered rear sunshade is available, which rear seat passengers can adjust for the rear, door and rear quarter windows.

* More than 99% virus and bacteria inhibition by 1 hour exposure of nanoe™ X. Japan Food Research Laboratories, Report No. 20073697001-0101, 15038623001-0101.

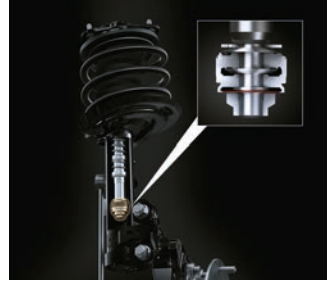
** Odour intensity reduced more than 1.8 by 1 hour exposure of nanoe™ X. Panasonic Corporation Product Analysis Center, Report No. BAA33-150318-M35.



01



02/03



04



05



06



07

01. HIGH RIGIDITY / LIGHTWEIGHT BODY / SUSPENSION

The ES has an extremely rigid body in order to deliver a ride that is particularly refined and stable. Constructed using Laser Screw Welding and advanced adhesive technology, that along with the extensive use of lightweight materials has helped minimise weight to improve fuel economy. In addition, the suspension tower brace in the engine bay and the redesigned rear suspension member further strengthen the rigidity of the body.

02. AERODYNAMICS

The ES features a near-flush under body that not only contributes to good fuel economy but also reduces wind noise and turbulence. To prevent noise from entering the cabin, door seals were improved, holes in the chassis and upper back of the car were minimised and the body sealant and panel alignment optimised. The optimised grille shutter features an air guide to reduce wind noise.

03. HYBRID ACOUSTICS™

Hybrid Acoustics™ uses a 3-layer dash inner silencer in which a noise insulation sheet is installed between two felt layers. This means travelling in the ES 300h is always a highly rewarding experience, even at higher speeds.

04. SWING VALVE SHOCK ABSORBER*

A swing valve shock absorber has been engineered for the ES 300h. Generating damping force for low-speed driving and motorway cruising, it delivers excellent steering response and stability, as well as superb ride comfort for all on board.

05. ACTIVE NOISE CONTROL

Active Noise Control suppresses any booming noise in the cabin generated by the engine. Noise-cancelling waves are outputted through the car's speakers which reduce the booming effect throughout the car.

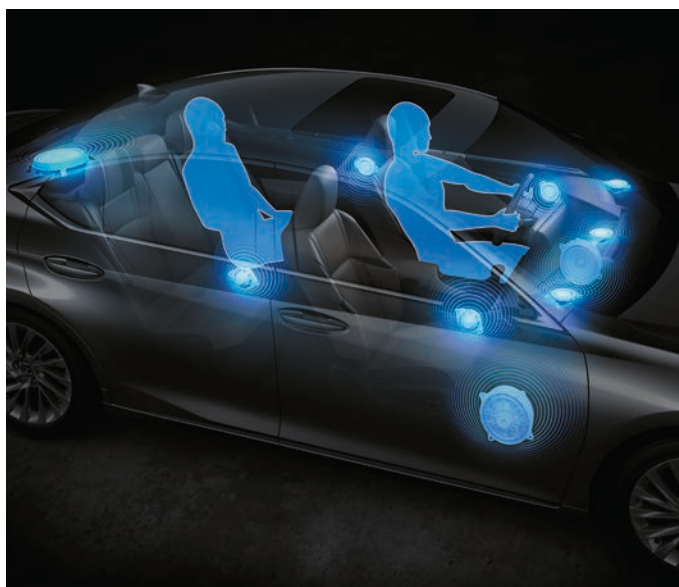
06. DRIVE MODE SELECT

The Drive Mode Select switch is positioned beside the meter hood bezel so that it can be operated without compromising your line of sight or changing your driving position. Eco, Normal and Sport modes are standard, except on the ES 300h F SPORT, which comes with Eco, Normal, Custom, Sport S and Sport S+ modes.

07. ELECTRIC POWER STEERING

A steering rack mounted Electric Power Steering, as opposed to a conventional steering column mounted system, gives more refined feedback from the road and a sense of unity with the car.

* Not available on ES 300h F SPORT.



01



02



03



04



05

01. 10-SPEAKER SYSTEM

The ES is available with a 10-speaker audio system which faithfully reproduces the original sound while retaining the whole live ambience of the music. Digital signal processing technology is used to reproduce CD-quality sounds from MP3 compressed audio files. The speakers at the side of the instrument panel have been installed at the optimum angle for achieving a dynamic and rich sound field. Thus, sound is efficiently delivered to the listener from the speakers both directly as well as indirectly, having been reflected off the car windows.

02. 17-SPEAKER MARK LEVINSON® PUREPLAY

The design architecture of the breakthrough Mark Levinson® PurePlay system was created to immerse driver and passengers in the most powerful, precise and pure audio experience yet. PurePlay leverages multiple technologies to provide outstanding in-vehicle performance: precision staging, world-class speaker design and placement, and unparalleled tuning and decompression technology. A total of seven Unity™ speakers are placed at shoulder height around the cabin, enhancing acoustics and creating a tonal synergy. The system also features two elliptical subwoofers in the front doors and the biggest subwoofer yet (265 mm) underneath the rear window.

03. OPTITRON INSTRUMENTATION

The ES 300h features crisp and clear Optitron instrumentation with a central 7-inch TFT (Thin Film Transistor) LCD (Liquid Crystal Display).

04. HEAD-UP DISPLAY

Vehicle data is projected in colour directly onto the windscreen. The Head-Up Display, measuring 260 mm x 97.5 mm, lets you check data like navigation commands, audio settings or safety features without taking your eyes off the road ahead.

05. EMERGENCY RESPONSE SYSTEM-eCALL

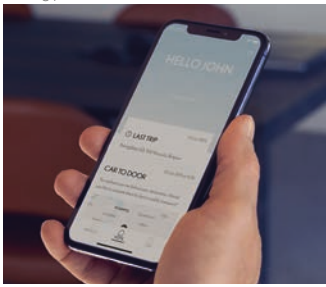
For your safety, eCall provides both manual and automatic emergency call functionality. Following a collision with airbag deployment, emergency services are automatically contacted and receive the vehicle's exact location and identification. You can also reach emergency services by pressing the emergency call button at any time.



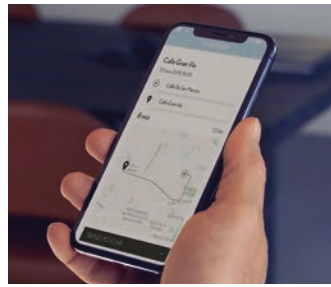
01



02



03



03



04



05

01. LEXUS LINK MULTIMEDIA

Much faster and easier to use, with improved resolution on both the 8" (Lexus Link Connect with cloud navigation) and larger 12.3" touchscreens (Lexus Link Pro with embedded hybrid navigation), Lexus Link Multimedia is the first system of its kind to use cloud navigation to regularly update your maps and traffic data. It also includes the "Hey Lexus" voice assistant.

02. SMARTPHONE INTEGRATION

With wireless Apple CarPlay® and wired Android Auto®, the ES allows you to easily display and access some of your smartphone's apps on the central display screen.

03. LEXUS LINK - CONNECTED SERVICES

Connecting to the new Lexus Link app transforms your ES into a connected car. Lexus Link gives you seamless access to connected services like:

- Driving Analytics: Tracks your journeys, driving style and lets you record business trips
- Hybrid Coach: Helps you drive your ES 300h more efficiently
- Find my Car: Locates and guides you back to your Lexus
- Share to Car¹: Lets you plan a route on another device and send it to your Lexus
- eCare: Lets you manage the service and maintenance of your ES

- Warning Lights: Explains the meaning of each warning light and any action you should take
- Car status: Notifies you if you've left the car windows open or forgotten to switch off the headlights. You can also check if your car is locked
- Remote Control: Remotely defrost your windscreen, activate hazard warning lights or lock and unlock your ES, from the comfort of your home

04. LEXUS LINK PREMIUM CONNECTIVITY

As an ES owner, you'll get the all benefits of Lexus Link Standard Connectivity free of charge over the entire lifetime of your car. The Lexus Link Premium Connectivity pack is also free for the first 4 years of ownership, and thereafter on a subscription basis. It includes pioneering features such as:

- Cloud-based navigation & Voice Assistant
- Road Events & Real Time Traffic information
- On- and off-street parking availability
- Remote Climate²: The ES offers remote control of air conditioning, steering wheel heating and seat heating

05. WIRELESS SMARTPHONE CHARGER

You can charge compatible smartphones via the inductive wireless battery charger, conveniently positioned on the ES's centre console.

¹ Features are shown here for illustration purpose only. Please consult your Lexus retailer information on which are available in your Country and for your car model.

² Remote climate control features may not be available in your area based on local legislation. Please consult your Lexus retailer information on which are available in your Country and for your car model.



01



02

01. AIRBAGS

Extending its safety performance even further, the ES has a comprehensive shield of ten airbags as standard. These include driver and front passenger airbags and knee airbags, side airbags front and rear, and curtain airbags covering all side windows.

02. LEXUS SAFETY SYSTEM + / 5-STAR NCAP RATING

On its launch, the ES 300h was named both 'Safest Large Family Car' and 'Safest Electric/Hybrid Car' by Euro NCAP. Innovative technologies such as Lexus Safety System + that includes a pioneering Pre-Collision System, now with pedestrian detection at night and bicycle detection during daytime, contribute to its class-leading Euro NCAP 5-star rating.



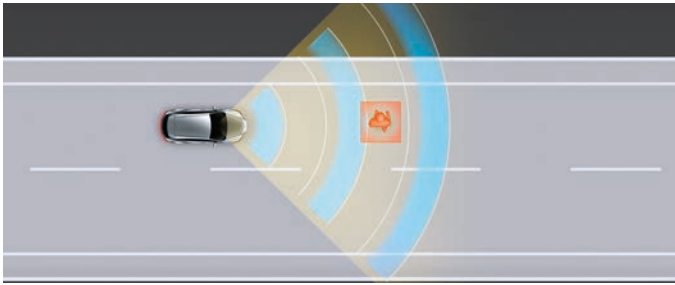
02

03. PRE-COLLISION SYSTEM

Capable of detecting oncoming vehicles and pedestrians during daytime, the Pre-Collision System can detect pedestrians at night and bicycles during daytime. To achieve this, the camera sensitivity and dynamic range help reduce accidents in the dark, for example, when a pedestrian in front of an oncoming vehicle is difficult to see due to the vehicle's lights. Furthermore, the millimetre wave radar detection area angle is wide, enabling bicycles to be detected during daytime. If the system judges that the possibility of a collision is high, the brakes are automatically applied to support collision avoidance, or reduce damage in the event of a collision.

04. DYNAMIC RADAR CRUISE CONTROL

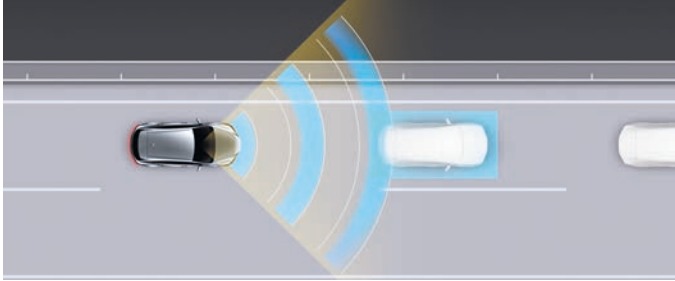
The system uses the millimetre wave radar sensor and camera to detect the preceding vehicle and provide control to maintain an appropriate distance. If the preceding vehicle stops, the system will stop the ES. When the preceding vehicle starts off again, the ES will start off and continue following. This system reduces the burden on the driver in situations requiring frequent starting and stopping.



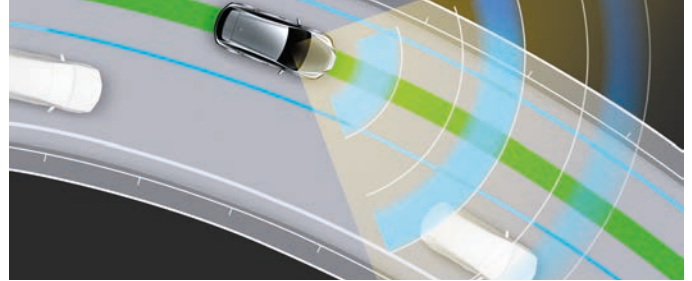
03



05



04



06



07



08

05. ROAD SIGN ASSIST

The Road Sign Assist (RSA) system on the ES recognises traffic signs and provides information to the driver in the multi-information display. Linked to Dynamic Radar Cruise Control (DRCC), the vehicle's speed setting can be quickly reset in accordance with the speed limit recognised by RSA. All it takes is the touch of a button.

06. LANE TRACING ASSIST

Lane Tracing Assist helps the driver keep the vehicle in the centre of the lane. It is also capable of providing assistance when driving around bends with a tighter radius than the previous system. If the system determines that there is a possibility of the vehicle departing from the lane, it will switch to departure prevention control, providing support for returning the vehicle to the centre of the lane.

07. INTERSECTION TURN ASSIST

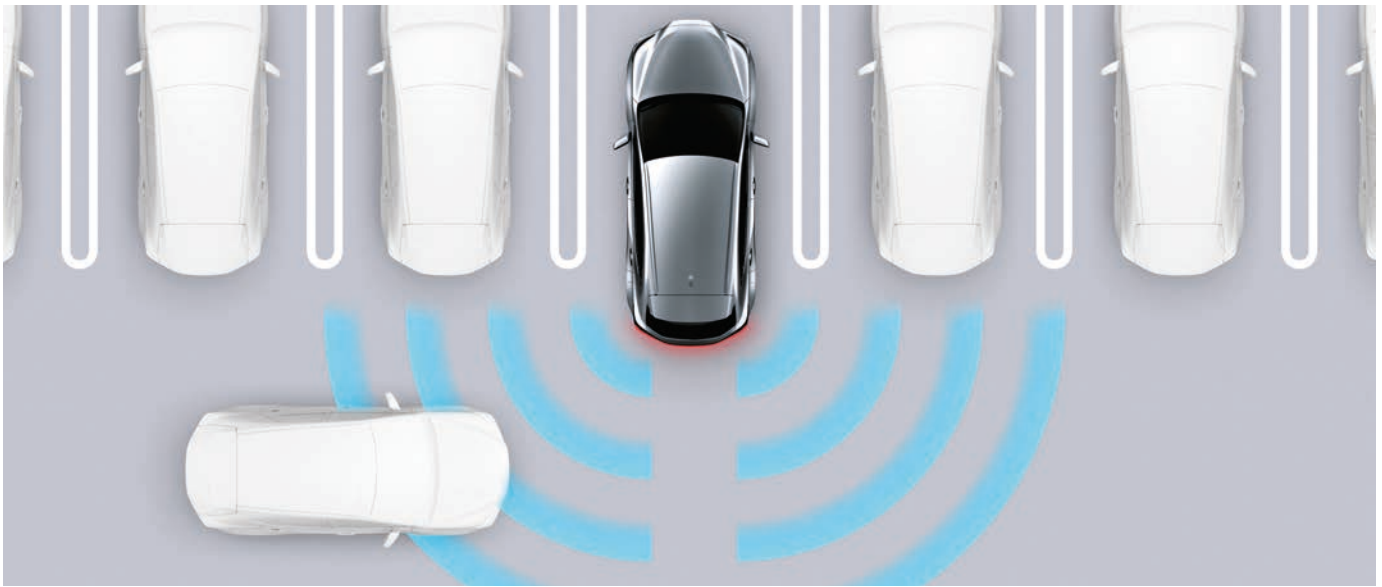
Lexus Safety System+ can use Intersect Turn Assist to detect oncoming vehicles and pedestrians when turning right or left at an intersection.

08. CURVE SPEED REDUCTION

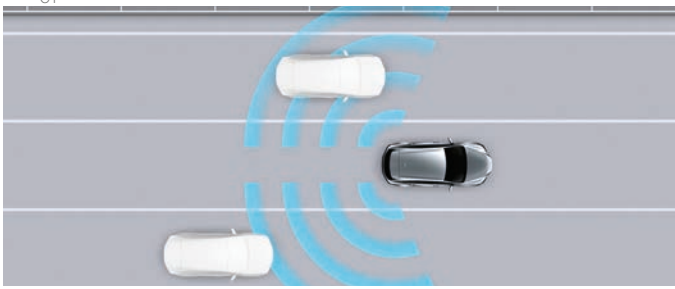
While using Dynamic Radar Cruise Control, Curve Speed Reduction will decelerate the car automatically when it determines the vehicle speed is too high for the curve you are negotiating.

09. EMERGENCY STEERING ASSIST

When a vehicle, pedestrian or cyclist is very close to or in your path of travel, Emergency Steering Assist on the ES will assist your steering movements to enhance the car's stability and prevent accidental lane departure.



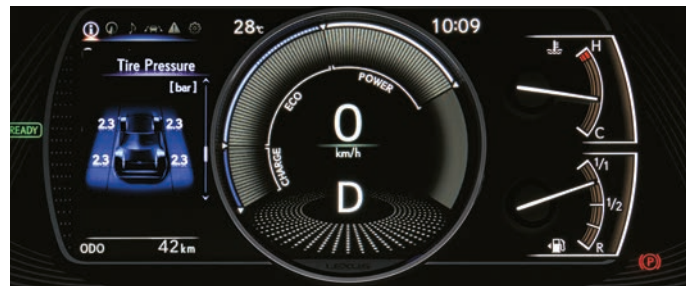
01



02

01. PARKING SUPPORT ALERT AND BRAKE

Giving greater confidence when parking at close quarters, Parking Support Alert uses clearance sonar, rear side radar and rear camera detection to detect obstacles around the car, as well as pedestrians and vehicles approaching from the rear. It alerts the driver with a buzzer and a warning in the central display and relevant door mirror. If necessary, Parking Support Brake will apply the brakes to avoid a collision.



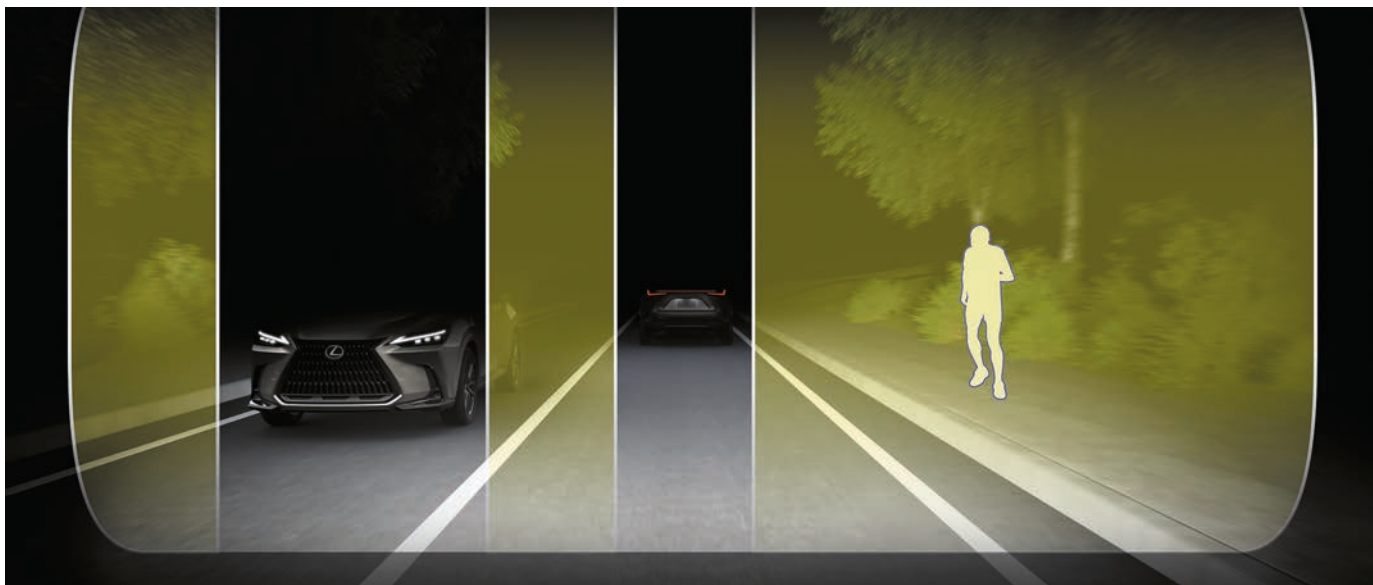
03

02. BLIND SPOT MONITOR

Radar devices mounted in the rear bumper detect vehicles in adjacent lanes that are not visible in the door mirrors. If the driver is indicating to change lane and a vehicle enters the blind spot, a warning signal appears in the relevant door mirror.

03. TYRE PRESSURE WARNING SYSTEM

Receiving data from a sensor installed in each tyre, the multi-information display shows tyre pressure data and warns accordingly should pressure drop in one of them. The system can reduce the risk of a puncture, while helping to improve fuel economy and tyre life.



04



05

04. BLADESCAN® ADAPTIVE HIGH-BEAM SYSTEM

After 13 years of research and development work – and marking another world-first for Lexus – optional BladeScan® Adaptive High-beam System (AHS) gives drivers an enhanced field of vision compared to conventional LED headlights. It works by projecting light from twelve LEDs onto a blade-shaped mirror rotating at 6000 rpm and then through a lens to produce a headlight beam. Exhaustive tests with BladeScan®AHS show that pedestrians and road signs can be seen earlier (56 m ahead compared to 32 m for conventional systems) and without the risk of dazzling other drivers.

05. DIGITAL SIDE-VIEW MONITOR

The optional Digital Side-View Monitor system replaces conventional door mirrors with compact, external cameras linked to in-car monitors. This pioneering Lexus technology provides you with a better rear side view in all driving conditions, especially at night and when it is raining. Reducing or eliminating blind spots completely, the system adapts automatically to give an extended view when turning or reversing. The camera quality of this pioneering technology has been refined to deliver a more natural view both during the day and at night.

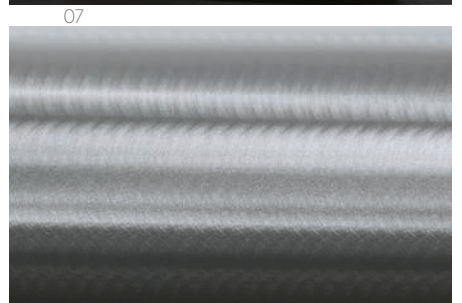
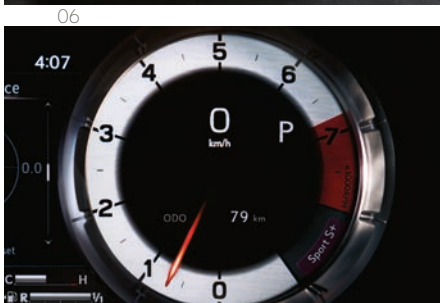
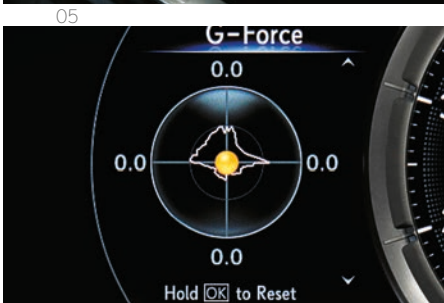


06

06. LEXUS PARKING ASSIST / PANORAMIC VIEW MONITOR

The Lexus Parking Assist Monitor* helps you reverse into parking spaces. On the central display it shows a video image of the space into which you are reversing, and overlays guidelines to facilitate you steering the car. For easier driving in confined spaces, the Panoramic View Monitor provides a near-360° view around the entire vehicle. It also creates a virtual 3D picture of your ES, with on-screen guides to assist close-quarter manoeuvring in the city.

* People and obstacles that show in the monitor differ from the actual position and distance. Do not rely completely on the monitor and, for safety, make sure you check around the vehicle with your own eyes when driving.



01. F SPORT GRILLE

The exclusive F SPORT grille and front bumper design sets the ES 300h F SPORT model apart. Finished in jet black, the grille's complex mesh required more than six months of intensive computer modelling to design.

02. 19" ALLOY WHEELS

Inspired by those on the LC luxury coupé and LS flagship sedan, exclusive 19" 5-twin-spoke alloy wheels feature a dark glossy black coating that matches the front grille treatment and accentuates the allure of the ES 300h.

03. F SPORT STEERING WHEEL

Featuring the F SPORT logo, you'll sense a special kind of connectedness every time you take this wheel in your hands. Finished in perforated leather, the F SPORT gearshift design matches the steering wheel to create an exciting sports ambiance.

04. F SPORT SEATS

Available in a striking new two-tone trim, enjoy figure-hugging F SPORT seats similar to those on the LC sports coupé. All stitching on the seats, steering wheel, instrument panel and gearshift is overseen by our 'Takumi' master craftspeople.

05. F SPORT SCUFF PLATES & DRILLED SPORT PEDALS

Giving durable protection, F SPORT scuff plates are finished with a brushed aluminium look and are inscribed with the Lexus logo. Offering excellent grip characteristics, drilled aluminium pedals reflect the motorsport design heritage of the ES 300h F SPORT.

06. ADAPTIVE VARIABLE SUSPENSION

An actuator on the ES F SPORT model's Adaptive Variable Suspension (AVS) expands the flow path of the hydraulic control solenoid's oil flow control valve. This is now responsive to low damping forces and achieves high-quality ride comfort while improving steering response and stability by expanding the range of the damping force.

07. PERFORMANCE DAMPERS

The ES 300h F SPORT model has performance dampers front and rear to increase the rigidity of the chassis. This way the actual suspension components cannot be influenced by chassis flex or vibration and the interior is also shielded from these vibrations.

08. F SPORT INSTRUMENTS

This F SPORT central meter features innovative 8" Thin Film Transistor technology and a design inherited from the iconic Lexus LFA supercar. The display has a tachometer needle and digital speed indicator, as seen on Lexus F marque cars.

09. ES Sport S+ MODE

Standard on the ES 300h F SPORT, use Drive Mode Select to engage Sport S+ mode that adjusts suspension, steering and throttle response to realise sportier driving performance.

10. F ALUMINIUM INLAY

With a look inspired by traditional Japanese swords, 'Hadori' cabin trim displays a three-dimensional effect that varies depending on the viewing angle.

01. PROTECTION FILMS

Stone chips, UV rays, road salt, flying bugs – your vehicle's paintwork is constantly under attack, spoiling its appearance and reducing your vehicle's value. Now, you can maintain a showroom fresh appearance with Paint Protection Films. Virtually invisible when applied, they provide the ultimate in long lasting protection and are available for the most vulnerable areas of your vehicle.

02. ILLUMINATED SCUFF PLATES

Lexus scuff plates add a stylish design feature while also protecting the door sill paintwork. Their brushed aluminium finish is highlighted by subtle logo illumination.

03. RUBBER FLOOR MAT

Tailored fit rubber floor mats help protect your carpets against the very worst conditions that you or your passengers dare to tread inside.

04. TEXTILE FLOOR MAT

Luxurious yet protective black textile car floor mats. Made of sound-absorbing acouelour, they are shaped for a perfect fit and the driver's mat has dual safety fixings to prevent it slipping.

05. TRUNK LINER

Made of tough, flexible plastic with a non-slip surface pattern and a raised lip around the edges to comprehensively protect the luggage space carpet against mud, dirt, sand and liquids.

06. TRUNK MAT

This tough, practical and easy to clean mat gives you choices for the appearance and protection of your boot space.

07. VERTICAL CARGO NET

Strong, woven, black nylon net with two compartments for holding small items securely in your car's boot area. The net fixes neatly on to pre-fitted side and floor hooks.

08. REAR BUMPER PROTECTION PLATE

Designed to protect the rear bumper paintwork against scratching when loading or unloading the boot, this accessory will keep your ES in perfect condition for many years to come.

09. 17" 10-SPOKE GLOSSY BLACK ALLOY WHEELS

The exclusive Lexus 10-spoke design of the glossy black 17" alloy wheel ideally complements the dynamic design of the vehicle. The alloy wheel is also available in a silver finishing.



01



02



03



04



05



06



07



08



09



A WORLD OF COLOUR

A unique process at Lexus produces colours so lustrous that they appear to react to changing light conditions.

Lexus designers recognise the emotional pull of colour on a car. This explains why they never use off-the-shelf colours, but develop their own, in a process that can take two years. In fact, the same attention to detail that goes into sculpting the design of a Lexus is replicated in the care that goes into the paintwork that will best show off that design.

Around 30 unique colours make up the Lexus palette. These tones are arrived at only after the colour designers have discarded hundreds of others, a process requiring a trained eye and a mastery of chromogenics - the science of pigments and colour compounds.

Bending test panels to mimic car contours, designers scrutinise colours under floodlights, in sunlight and shade, and in different months of the year. Their expert eyes are uncanny in selecting the right tones to complement each model. In the case of the ES, for example, Sonic Grey is among the colours which perfectly accentuate the elegant poise of this executive sedan.

Then there's the process of developing and applying that colour, from the lab technicians mixing the paint to the paint shop crew who ensure a flawless, uniform coat. And on to inspections where, under RGB lighting, imperfections as small as 0.5 millimetres are detected. By hand.

Lexus has developed a five-coat process which results in a level of depth and luminescence not possible with traditional paintwork. Between layers, the paintwork is gently wet-sanded by hand under the supervision of 'Takumi' master craftspeople, a painstaking process to ensure each fresh surface is blemish-free.

Even to the untrained eye, the evenness and glossiness of this paint is evident. Just watch as these colours appear to change as the light conditions change.

F WHITE | 083¹



SONIC WHITE | 085²



SONIC PLATINUM | 1L2



SONIC TITANIUM | 1J7



SONIC GREY | 1L1



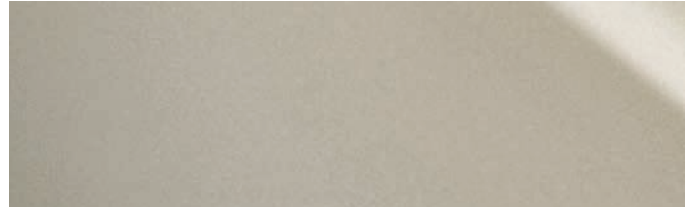
GRAPHITE BLACK | 223



MORELLO RED | 3R1



ICE ECRU | 4X8



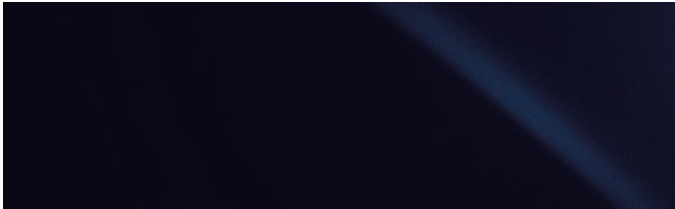
SUNLIGHT GREEN | 6X0



SAPPHIRE BLUE | 8X1¹



DEEP BLUE | 8X5²



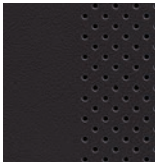
¹ Exclusive to ES 300h F SPORT and F SPORT Design.

² Not available on ES 300h F SPORT and F SPORT Design.

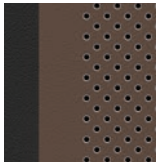
Please note: due to printing variances, actual paintwork colours may vary slightly from those illustrated.



TAHARA TRIM¹



Black



Forest Brown



Hazel

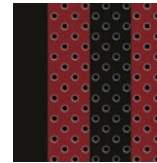


Ammonite Sand

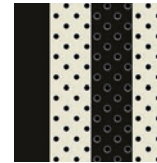
F SPORT TAHARA TRIM²



Black



Flare Red

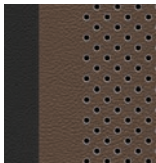


F White

SMOOTH LEATHER³



Black



Forest Brown



Hazel

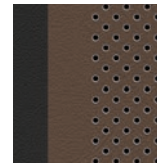


Ammonite Sand

SEMI-ANILINE LEATHER⁴



Black



Forest Brown



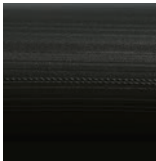
Hazel



Ammonite Sand



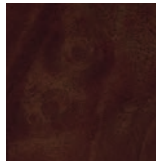
INLAYS⁵



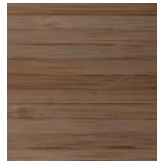
Black Grain



Sumi Black Walnut

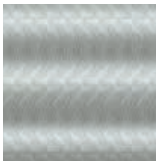


Brown Walnut



Dark Bamboo

F SPORT INLAY⁶



F Aluminium

¹ Tahara trim is standard on Comfort and F SPORT Design grades.

² F SPORT Tahara trim is a unique design standard on F SPORT grade.

³ Leather upholstery is standard on Executive grade.

⁴ Semi-aniline leather is standard on Luxury grade.

⁵ Black Grain inlays are standard on Comfort and F SPORT Design grades. Dark Bamboo, Sumi Black Walnut and Brown Walnut, are standard on Executive and Luxury grades.

⁶ F Aluminium is standard on F SPORT grade.

TECHNICAL DATA

ENGINE		ES 300h
Capacity (cm ³)		2487
Cylinders / Valves		L4 / 16
Maximum power (DIN hp @ rpm)		178 @ 5700
Maximum power (kW @ rpm)		131 @ 5700
Maximum torque (Nm @ rpm)		221 @ 3600 - 5200
ELECTRIC MOTOR		
Type		AC synchronous, permanent magnet
Maximum power (DIN hp)		120
Maximum power (kW)		88
Maximum torque (Nm)		202
TRANSMISSION		
Type		Electronic-Continuously Variable Transmission
Drive		Front-Wheel Drive
TOTAL SYSTEM OUTPUT ¹		
Total power (DIN hp)		218
Total power (kW)		160
PERFORMANCE		
Maximum speed (km/h)		180
Acceleration 0-100 km/h (s)		8.9
FUEL CONSUMPTION ² (l/100km)		
Combined		5.4 - 5.1
CO ₂ EMISSIONS ² (g/km)		
Combined		123 - 115
EMISSION STANDARD		
Euro Class		EURO 6d-ISC-FCM
WEIGHTS (kg)		
Gross vehicle		2150
Kerb (min. - max.)		1680 - 1740
CAPACITIES (l)		
Luggage volume ³		454
Fuel tank capacity		50

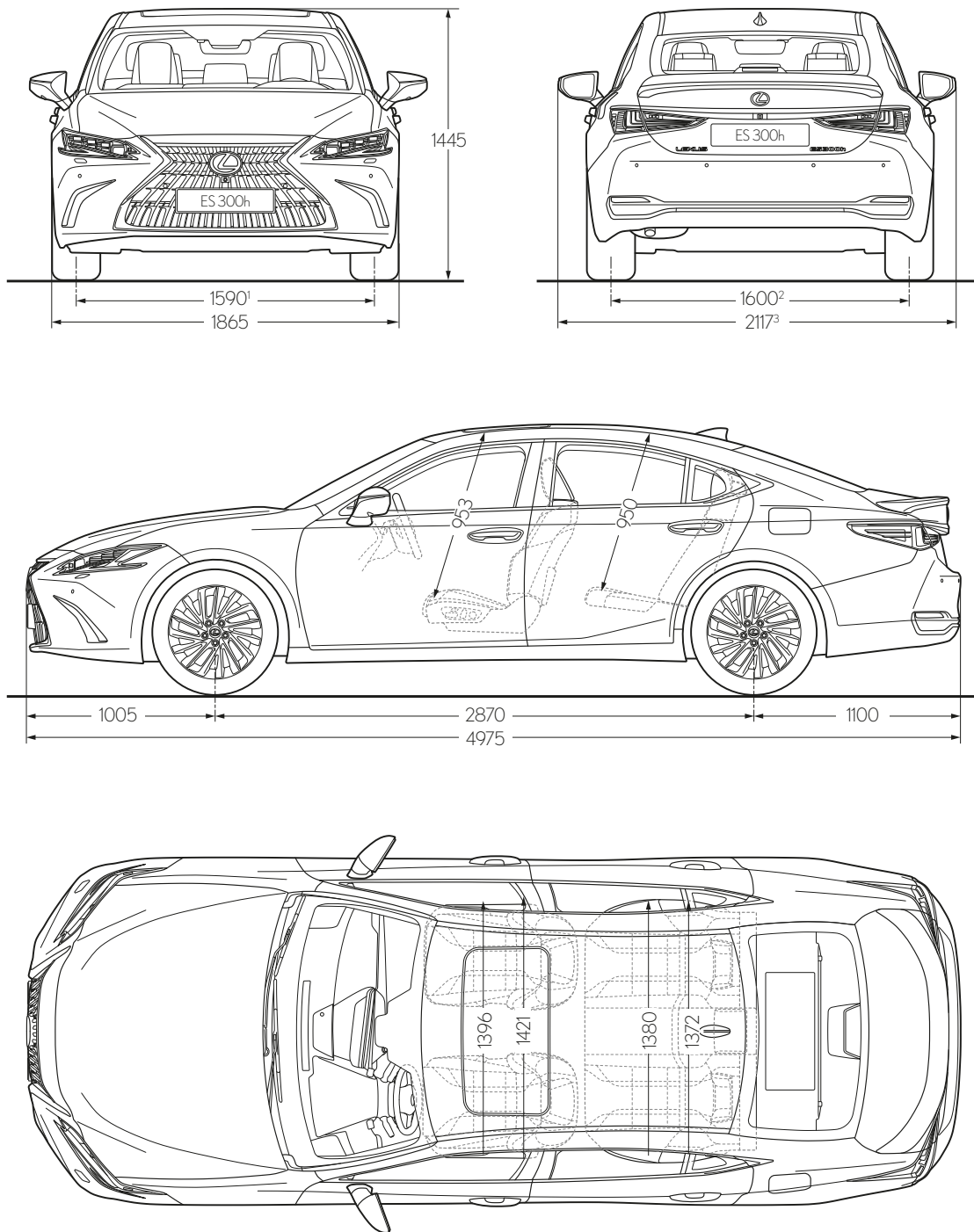
¹ The combined total power of the engine and electric motor.

² The fuel consumption and CO₂ values are measured in a controlled environment on a representative production model, in accordance with the requirements of the new WLTP European Regulation EC 2017/1151 and its applicable amendments. For each individual vehicle configuration, the final fuel consumption and CO₂ values may be calculated based on the ordered optional equipment. The fuel consumption and CO₂ values of your vehicle may vary from those measured or calculated values, as driving behaviour as well as other factors (such as road conditions, traffic, vehicle condition, tyre pressure, load, number of passengers, etc.) have an influence on a car's fuel consumption and CO₂ emissions. For more information regarding the new WLTP test method, please visit: www.lexus.eu/wltp#nedc.

³ Luggage volume is calculated as per the VDA method.

Specifications shown in this brochure are based upon the latest available information at the time of printing. Further technical data, including any updates, can be found at www.lexus.eu.

TECHNICAL DATA



¹Figure quoted is for ES models equipped with 18" or 19" alloy wheels. For models equipped with 17" wheels, the figure is 1600.

²Figure quoted is for ES models equipped with 18" or 19" alloy wheels. For models equipped with 17" wheels, the figure is 1610.

³Figure quoted is for ES models with door mirrors. For models with Side-view camera, the figure is 2030.

Please note: the dimensions illustrated / noted are measured in millimetres.

BE OUR GUEST

How we treat our customers is guided by an ancient Japanese philosophy of hospitality.

Translated from the Japanese as 'hospitality and polite service', Omotenashi is about much more than excellence of service; it is an ancient concept centred around anticipating the needs of another, even before they arise. Omotenashi influences how we design and engineer our cars at Lexus, and equally how we treat you, the Lexus owner. Not just at the point of sale but over the life of your car. We want you to feel valued in every interaction you have with us. To feel more than a customer.

Whether as a private or fleet driver, you'll experience Omotenashi each time you visit our showrooms. In the warm reception on hand from friendly staff intent on welcoming you as if you were a guest in their home. In the inviting atmosphere and impressive facilities of the lounge, where you can avail of refreshments, catch up on news, enjoy high-speed Internet or carry on with your work. And in the knowledge that our Lexus technicians are working with precision and efficiency to get you back on the road with minimum interruption to your day.

PEACE OF MIND WITH LEXUS RELAX*

Lexus Relax provides you with complete peace of mind even after your manufacturer's warranty expires. Drive away carefree with an extra 12 months warranty every year you service your Lexus with us.

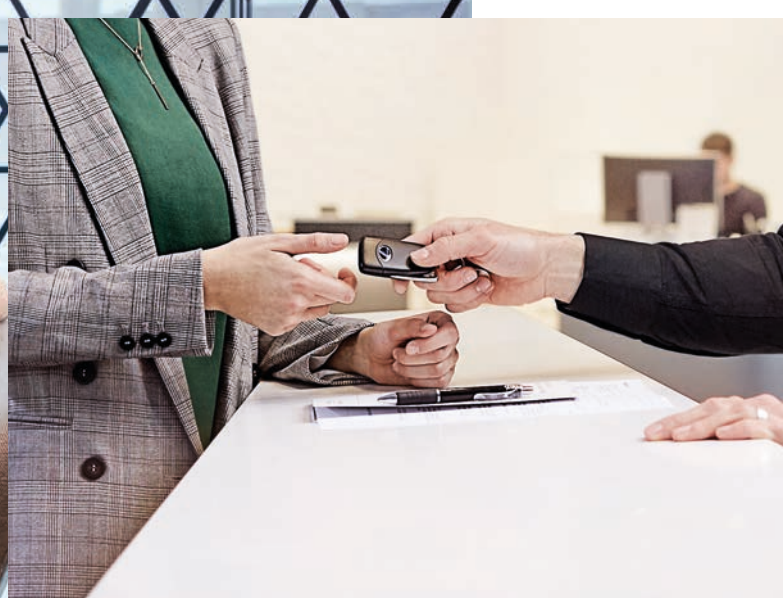
LEXUS EASY MOBILITY SOLUTION*

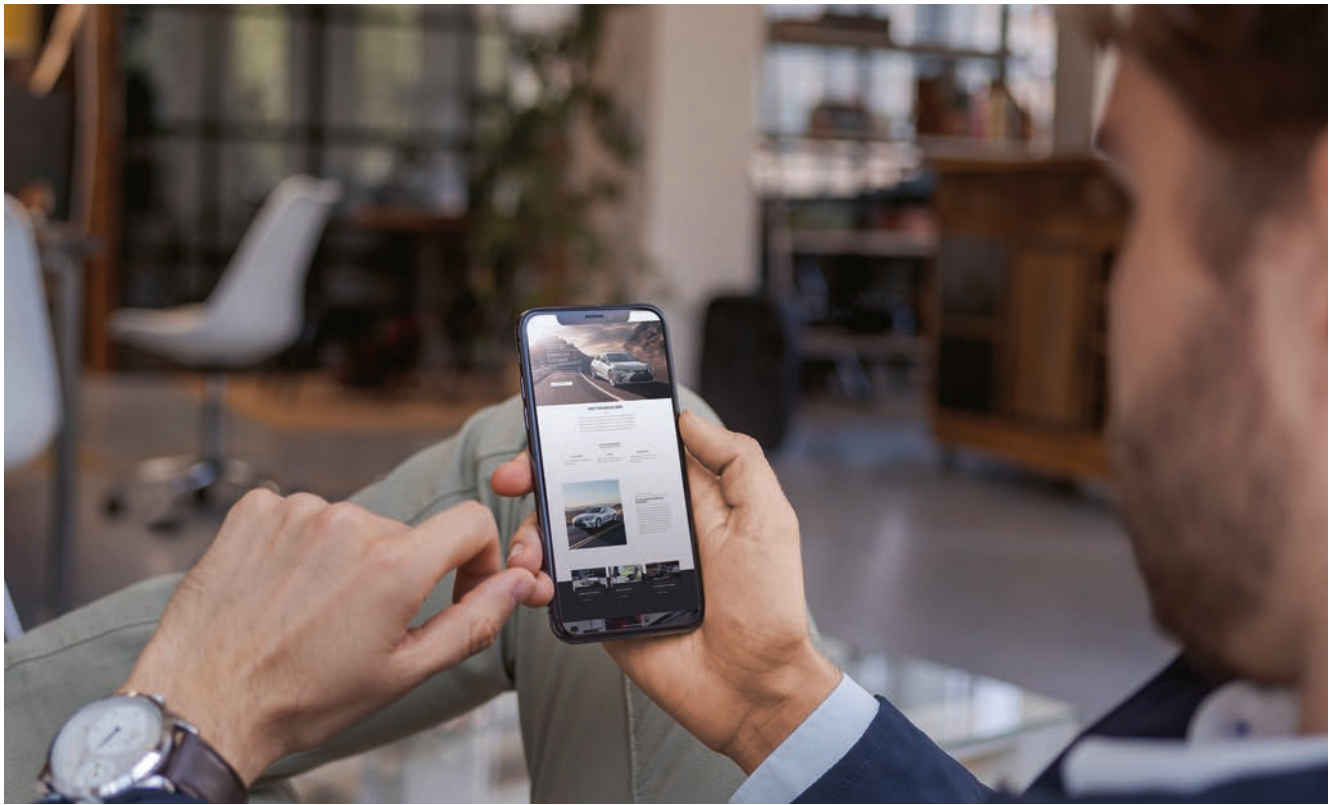
From financing to insurance, maintenance and even tyres, the Lexus Easy flexible mobility solution is the easy way to drive and look after a Lexus.

It's not only cars that make Lexus unique. It's the philosophy which permeates everything we do and which extends to an ownership experience that makes you feel special. Just as a guest should.

* Lexus Relax and Lexus Easy are not available for all markets.
Please enquire at your local Lexus Authorised Retailer.







DISCOVER MORE ONLINE

Find out more about the ES 300h online. Take time to explore which equipment grade best suits your lifestyle, learn about our world-class service and finance offerings and sign up for our regular newsletter. And if you're interested in how the ES 300h feels to drive, you can book a test drive with your local Lexus Retailer.

Lexus.eu/ES



© 2023 Lexus Europe* reserves the right to alter any details of specifications and equipment without notice. Details of specifications and equipment are also subject to change to suit local conditions and requirements. Please enquire at your local Lexus Authorised Retailer of any such changes that might be required for your area.

Note: vehicles pictured and specifications detailed in this brochure may vary from models and equipment available in your area. Vehicle body colour might differ slightly from the printed photos in this brochure.

For further information please visit our website: www.lexus.eu

Taking care of the environment is a priority for Lexus. We take many measures to ensure that during the lifecycles of our vehicles – from design, production, distribution, sales and service to end-of-life – their environmental impact is minimised. Your retailer will be happy to provide more information on end-of-life vehicle requirements.

* Lexus Europe is a division of Toyota Motor Europe NV/SA.

Printed in Europe, September 2023

